

11	Jan. 25 2021	Rev C/Resp/OPMA
10	Nov. 19 2020	ReSP
9	Oct. 22 2020	IFC
8	Jun. 25 2020	Re-submitted for BP
7	Apr. 24 2020	Issued for BP
6	Feb. 14 2020	Issued for DP Resubmission
5	Feb. 07 2020	Issued for DP Resubmission
4	Jan. 22 2020	Issued for DP Resubmission
3	Sep. 09 2019	Issued for DP Resubmission
2	May 17 2019	Issued for DP Resubmission
1		Issued for DP Resubmission

**durantek**  
Durante Kreuk Ltd  
102 - 1637 West 5th Avenue Vancouver  
BC V6J 1K2  
1 604 684 4611  
1 604 684 0577  
www.dk.bc.ca

**PRIMEX INVESTMENTS**

**REQUESTING A VARIANCE OF FENCE & RETAINING WALL COMBINED HEIGHT FROM A MAXIMUM OF 1.8 M TO 4.064 M AT HIGHEST POINT**

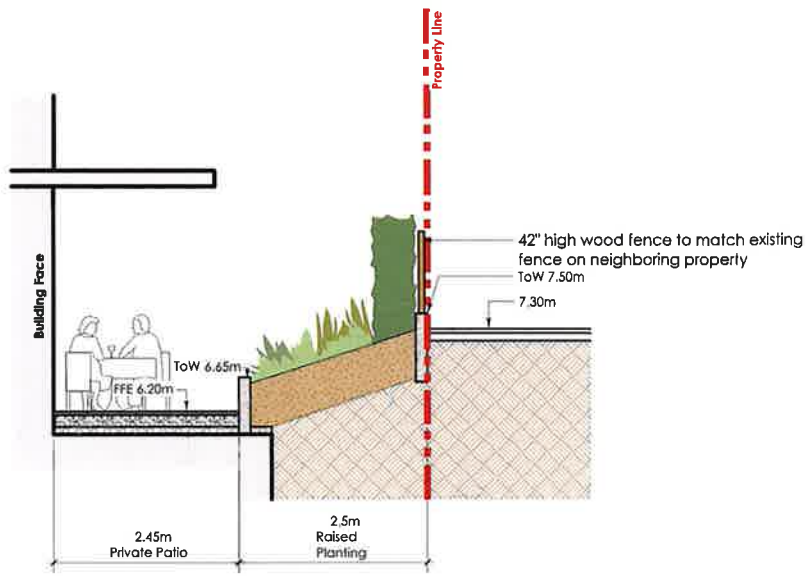
**REQUESTING A VARIANCE OF FENCE & RETAINING WALL COMBINED HEIGHT FROM A MAXIMUM OF 1.8 M TO 4.064 M AT HIGHEST POINT**

South Neighbour's Maximum Existing Fence Height is 8' / 2.438

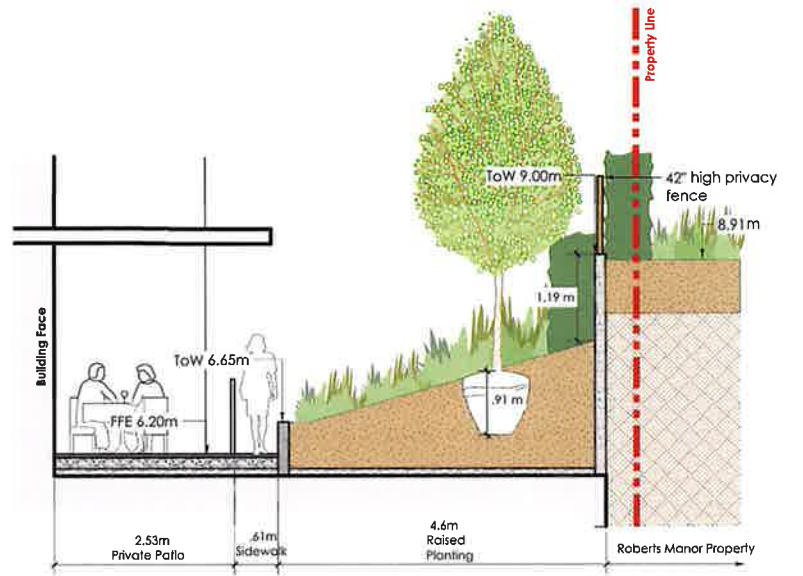
Scale: 1/8" = 1'-0"  
Drawing Title: Landscape Planting Plan  
Project No: 18097  
Sheet No:



# Development Permit Approved Fence/Landscape Detailing

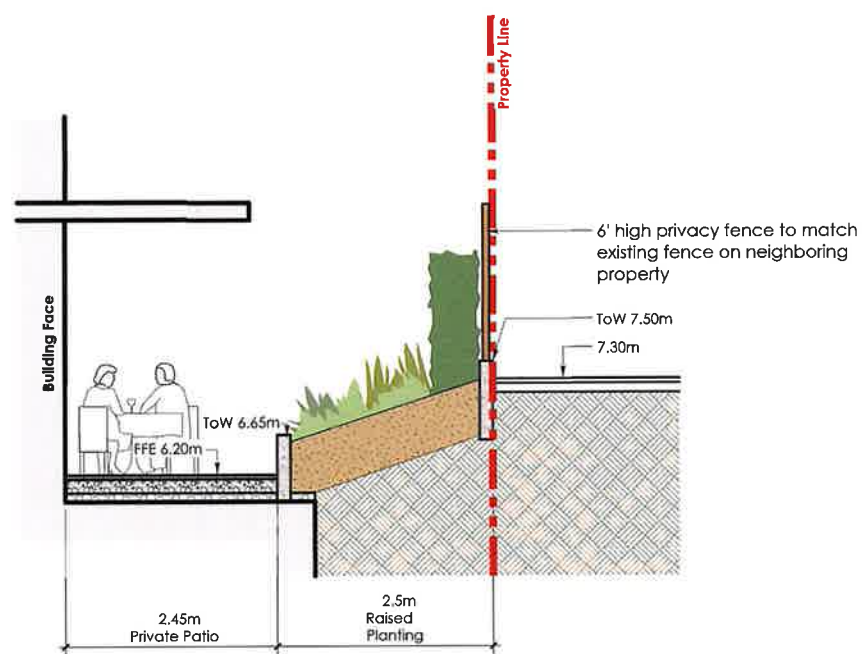


C  
L1.2  
Section Through Patio Facing South  
SCALE 1/4" = 1' 0"

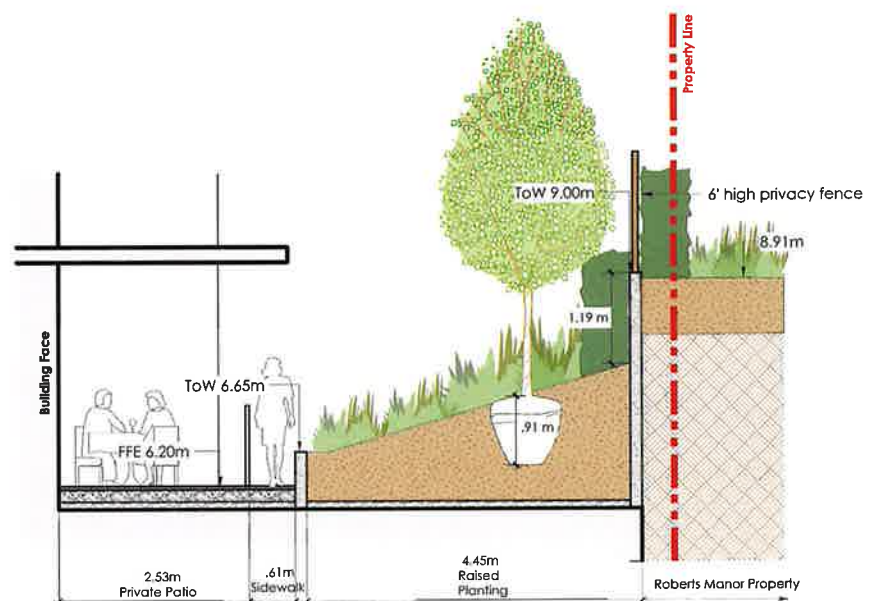


D  
L1.4  
Section Through Patio Facing East  
SCALE 1/4" = 1' 0"

# Proposed Fence/Landscape Detailing



C  
L1.2  
Section Through Patio Facing South  
SCALE 1/4" = 1' 0"



D  
L1.4  
Section Through Patio Facing East  
SCALE 1/4" = 1' 0"