

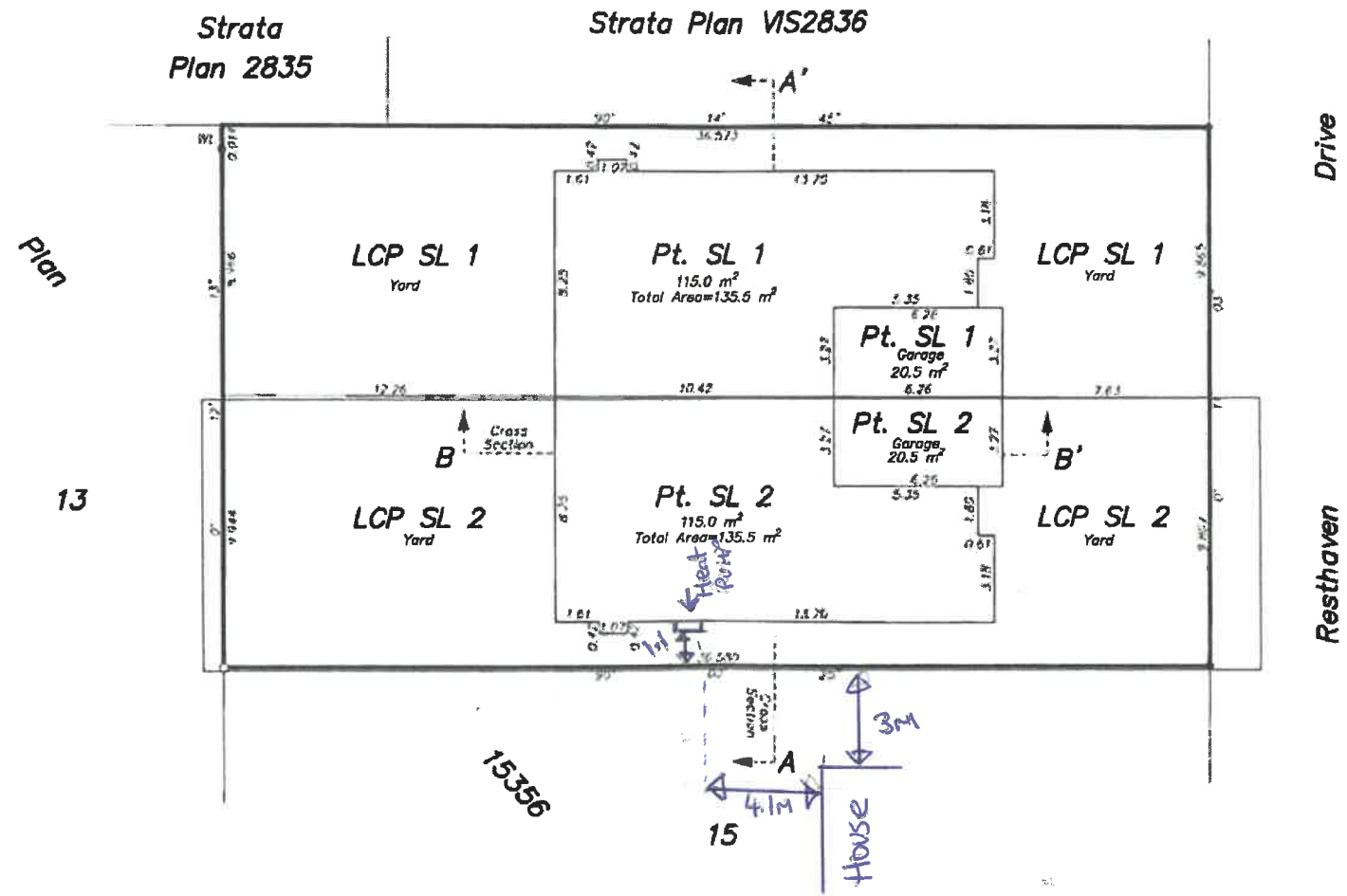
Ground Floor

Sheet 3 of 4 Sheets
Strata Plan EPS5312



Distances are in metres, unless otherwise noted.
The intended plot size of this plan is 432mm in height by 560mm in width (C size) when plotted at a scale of 1:150.

Cross section arrows on this plan point in the direction of view.



Brent W. Mayenburg, B.C.L.S. 910
October 18, 2018

Wey Mayenburg Land Surveying Inc.
www.weysurveys.com
#4-2227 James White Boulevard
Sidney, BC V8L 1Z5
Telephone (250) 656-5155
File: 180047/STR/BM

Strata Plan Of Lot 14, Section 14, Ranges 3 and 4 East, North Saanich District, Plan 15356.

BCGS 92B 063



The intended plot size of this plan is 560mm
in width by 432mm in height (C size) when
plotted at a scale of 1:250.

Distances are in metres, unless otherwise indicated.

Integrated Survey Area No 29, Town Of Sidney,
NAD83 (CSRS) 3.0.0.BC.1.CRD.

Grid bearings are derived from observations between
geodetic control monuments 79H0450 and 79H0531.

The UTM coordinates and estimated horizontal positional
accuracy are derived from conventional survey observations
to geodetic control monuments 79H0450 and 79H0531.

This plan shows horizontal ground-level distances
unless otherwise specified. To compute grid distances
multiply ground-level distances by the average combined
factor of 0.9996127 which has been derived from
geodetic control monuments 79H0450 and 79H0531.

Legend

- ⊙ Denotes Control Monument Found
- Denotes Standard Iron Post Found
- Denotes Standard Iron Post Placed
- LCP Denotes Limited Common Property
- PL Denotes Part
- SL Denotes Strata Lot
- WI Denotes Witness

Note:
This plan shows one or more witness posts
which are not set on the true corners

Civic Addresses

- SL 1= 10224 Resthaven Drive, Sidney, BC
- SL 2= 10222 Resthaven Drive, Sidney, BC

79H0531
Datum: NAD83 (CSRS) 3.0.0.BC.1.CRD
UTM Zone 10
UTM Northing: 5389721.531
UTM Easting: 470082.308
Point Combined Factor: 0.9996126
Estimated Horizontal Positional Accuracy= 0.01

79H0450
Datum: NAD83 (CSRS) 3.0.0.BC.1.CRD
UTM Zone 10
UTM Northing: 5399845.648
UTM Easting: 470325.373
Point Combined Factor: 0.9996128
Estimated Horizontal Positional Accuracy= 0.01

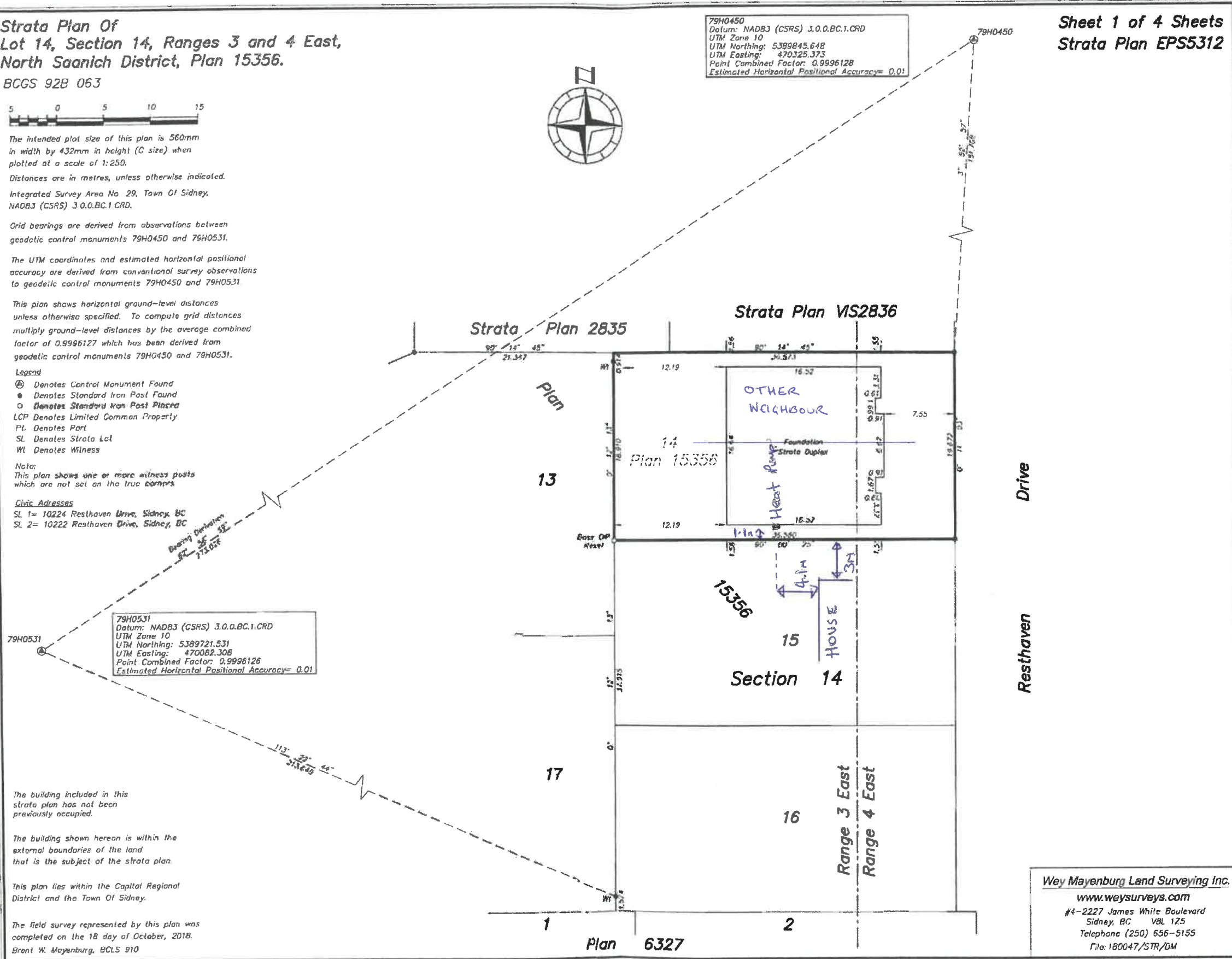
Sheet 1 of 4 Sheets
Strata Plan EPS5312

The building included in this
strata plan has not been
previously occupied.

The building shown hereon is within the
external boundaries of the land
that is the subject of the strata plan.

This plan lies within the Capital Regional
District and the Town Of Sidney.

The field survey represented by this plan was
completed on the 18 day of October, 2018.
Brent W. Mayenburg, BCLS 910



Wey Mayenburg Land Surveying Inc.
www.weysurveys.com
#4-2227 James White Boulevard
Sidney, BC V8L 1Z5
Telephone (250) 656-5155
File: 180047/STR/DM