



**CONTENT**

- L0.0 COVER SHEET
- L0.1 TREE MANAGEMENT PLAN
- L0.2 PRECEDENT IMAGE AND DESIGN RATIONALE
- L0.3 ILLUSTRATIVE SECTIONS
- L0.4 TOWNHOUSE COMMON AMENITY AREA
- L1.1 LAYOUT & MATERIAL PLAN - GROUND LEVEL
- L1.2 LAYOUT & MATERIAL PLAN - CONDO ROOF LEVEL
- L2.1 GRADING PLAN - GROUND LEVEL
- L3.1 PLANTING PLAN - GROUND LEVEL
- L3.2 PLANTING PLAN - CONDO ROOF LEVEL

REV	DESCRIPTION	DATE
ISSUED FOR DIP		2023-07-10

DATE: 2023-07-10  
PROJECT NUMBER: LA02  
DRAWN BY:  
CHECKED BY: JZ

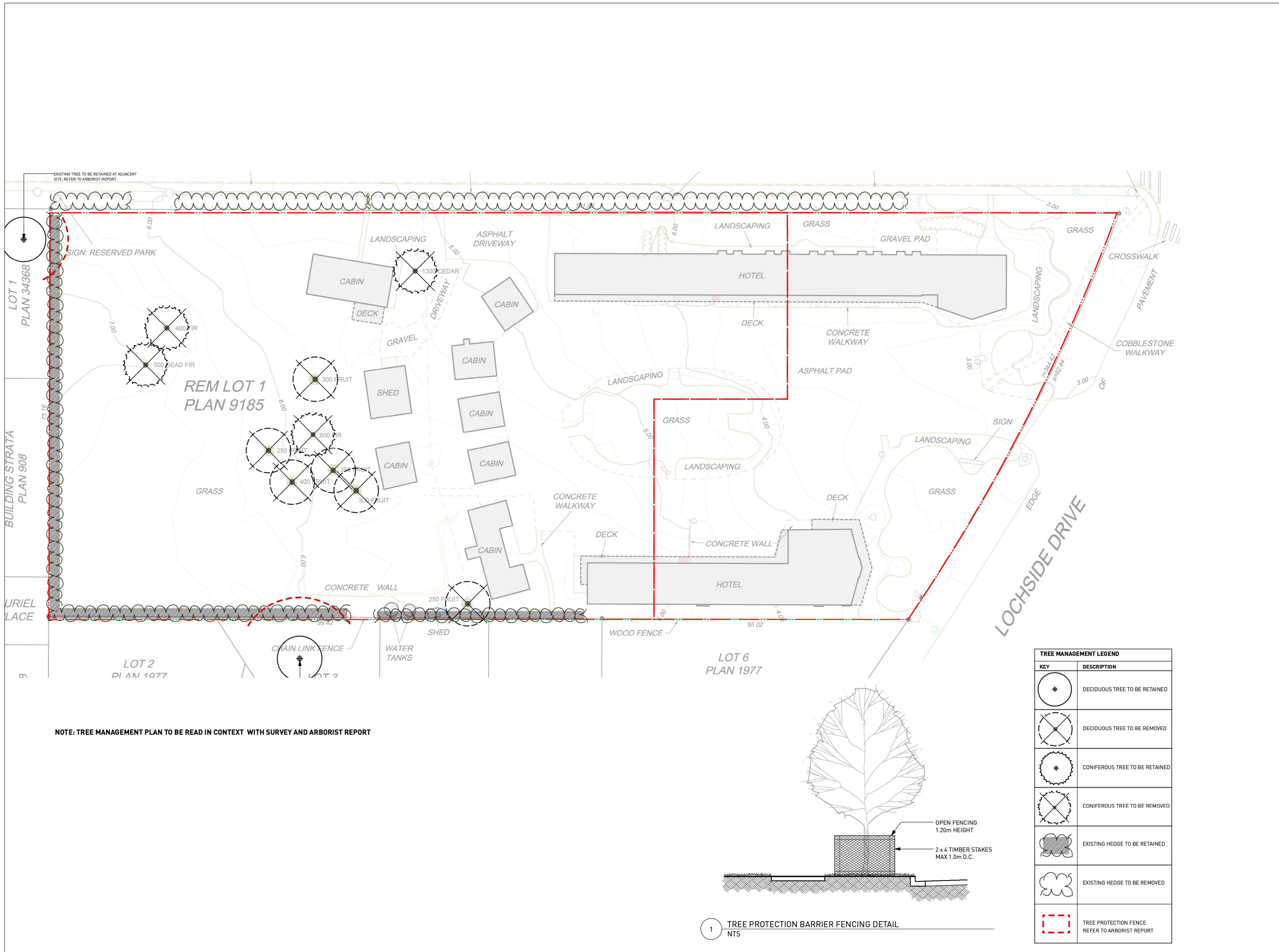
↑ NORTH  
SCALE: 1:300

PROJECT  
**CEDARWOOD**  
MULTI-FAMILY DEVELOPMENT  
9622 LOCHSIDE DRIVE, SIDNEY, BC

DRAWING TITLE

**COVER SHEET**

DRAWING NO.  
**L0.0**



ISSUED FOR DP	2023-07-10
REV DESCRIPTION	DATE
DATE	2023-07-10
PROJECT NUMBER	LA02
DRAWN BY	
CHECKED BY	JZ

NORTH SCALE : 1:300

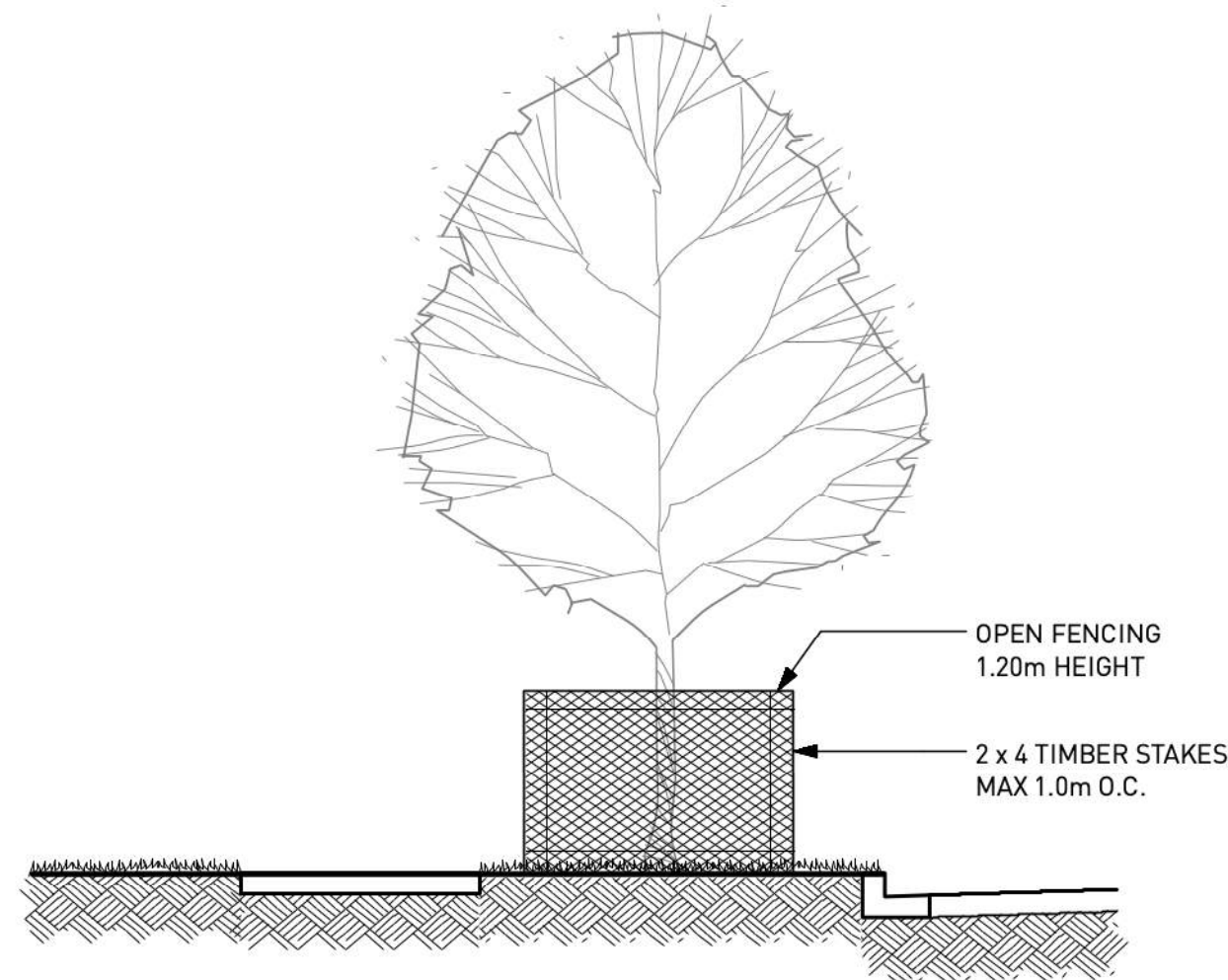
PROJECT  
**CEDARWOOD**  
MULTI-FAMILY DEVELOPMENT  
9522 LOCHSIDE DRIVE, SIDNEY, BC

**TREE MANAGEMENT PLAN**

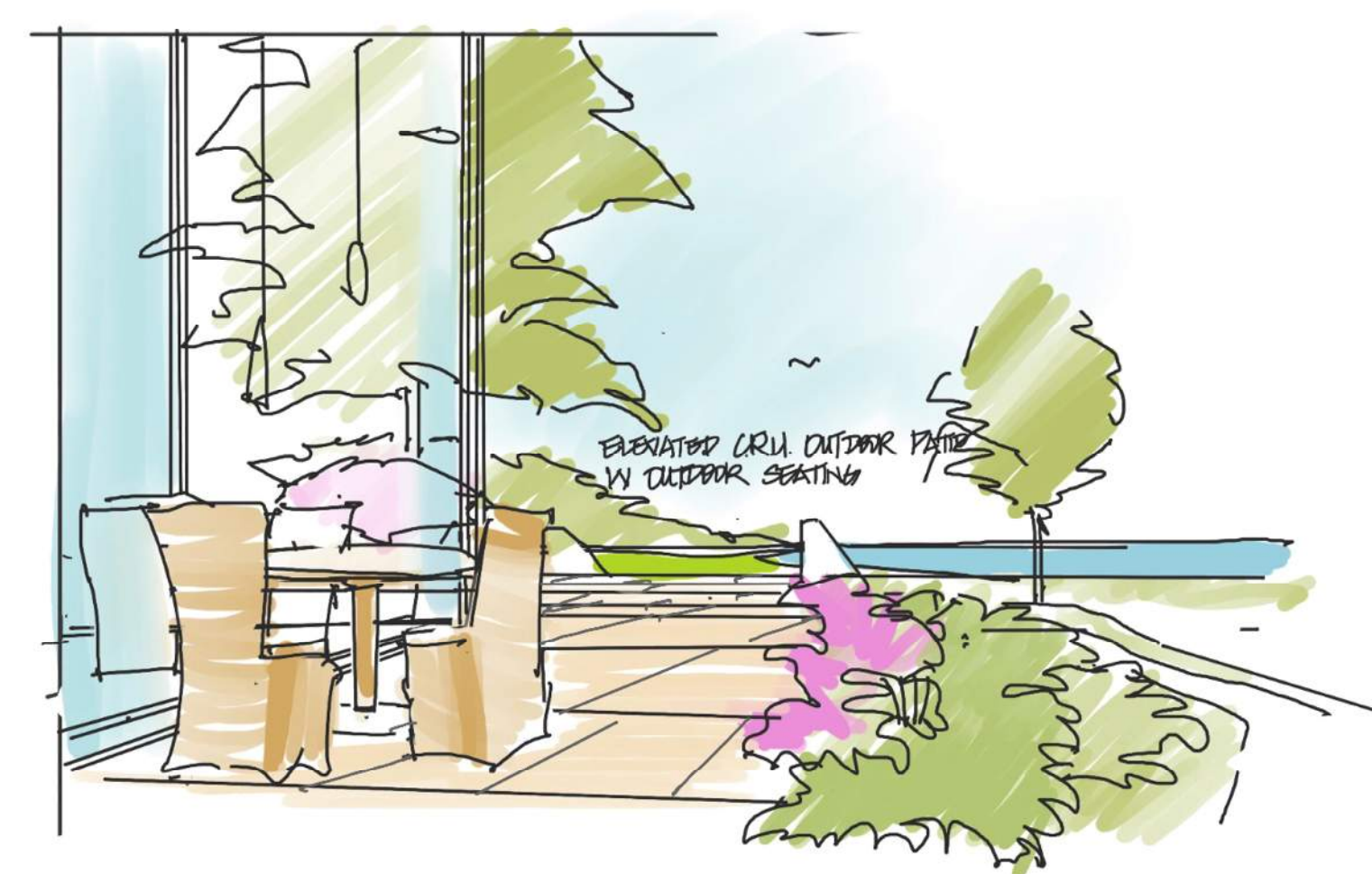
DRAWING No.

**L0.1**

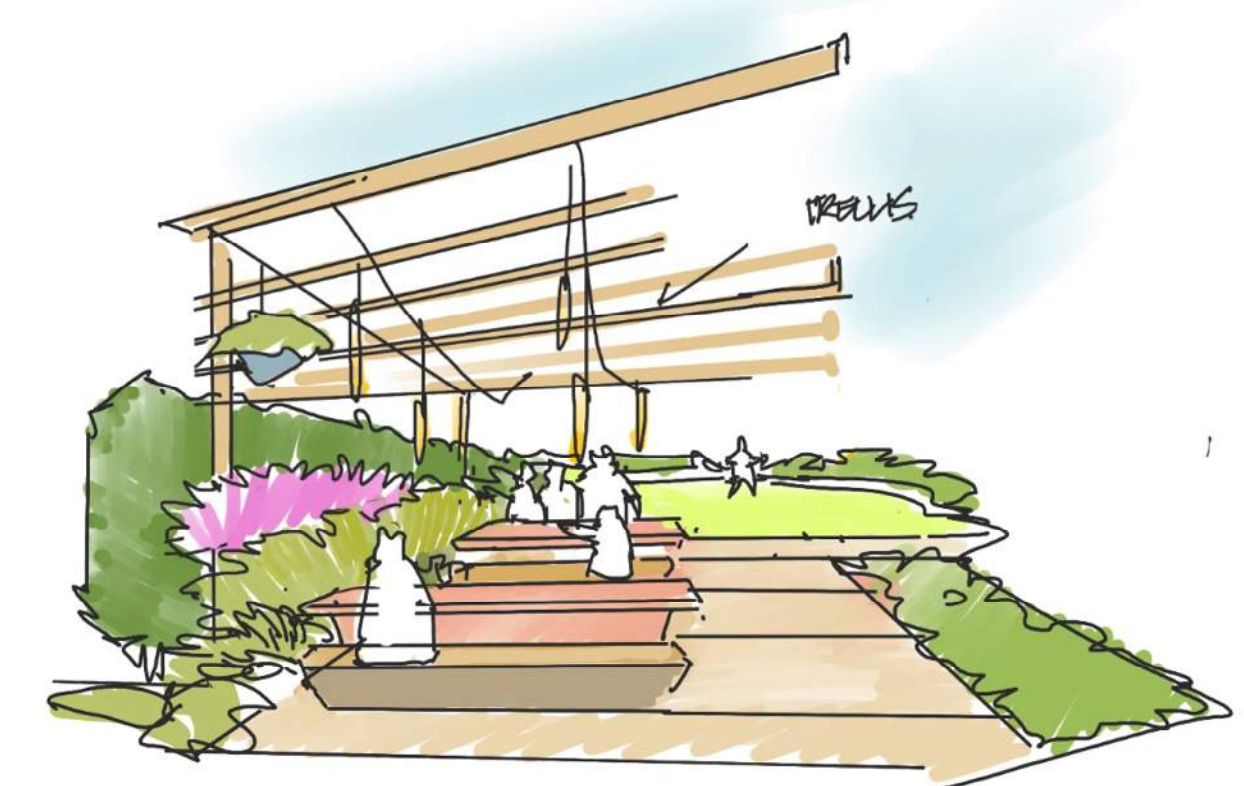
TREE MANAGEMENT LEGEND	
KEY	DESCRIPTION
	DECIDUOUS TREE TO BE RETAINED
	DECIDUOUS TREE TO BE REMOVED
	CONIFEROUS TREE TO BE RETAINED
	CONIFEROUS TREE TO BE REMOVED
	EXISTING HEDGE TO BE RETAINED
	EXISTING HEDGE TO BE REMOVED
	TREE PROTECTION FENCE REFER TO ARBORIST REPORT



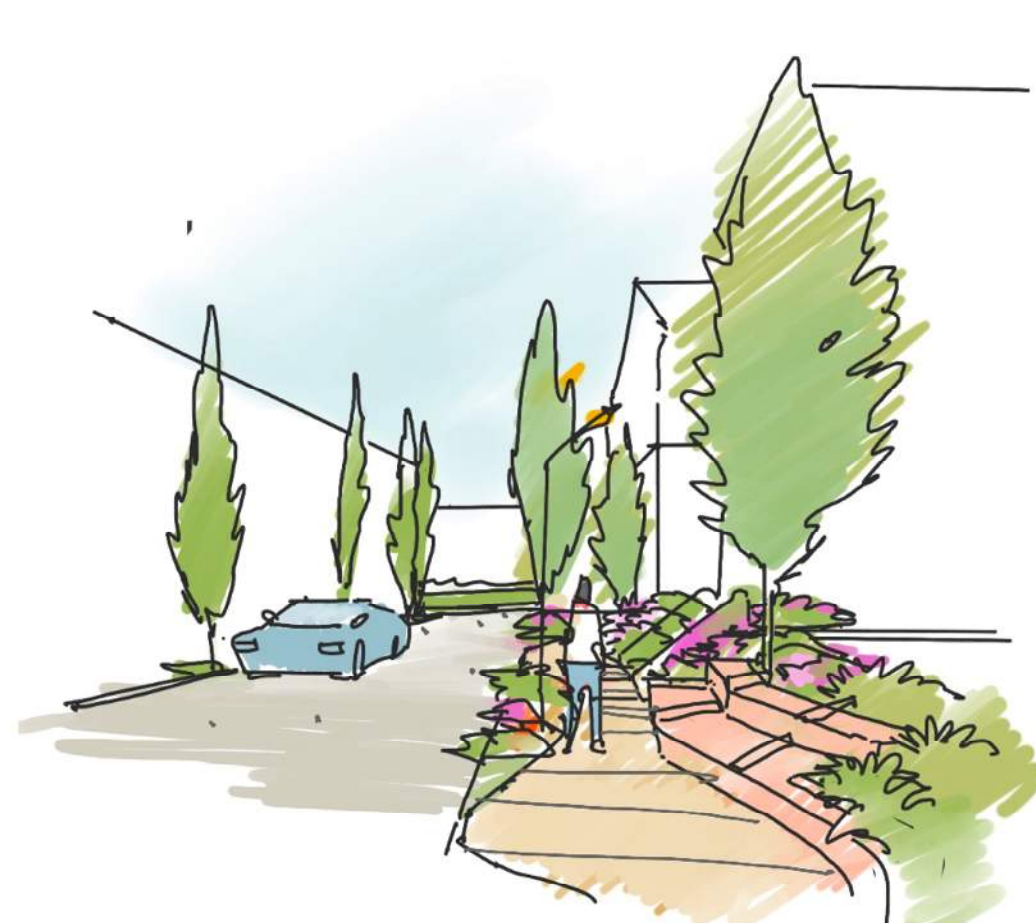
1 TREE PROTECTION BARRIER FENCING DETAIL NTS



RETAIL FRONTAGE



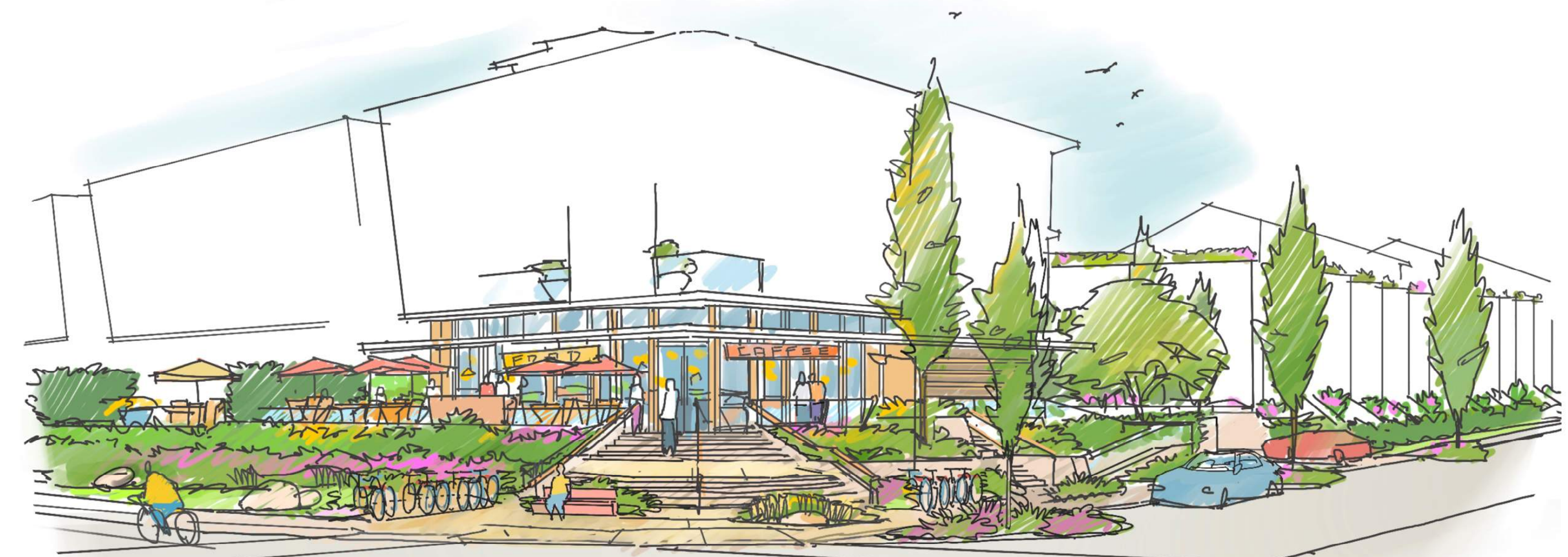
TOWNHOUSE COMMON OUTDOOR AMENITY AREA



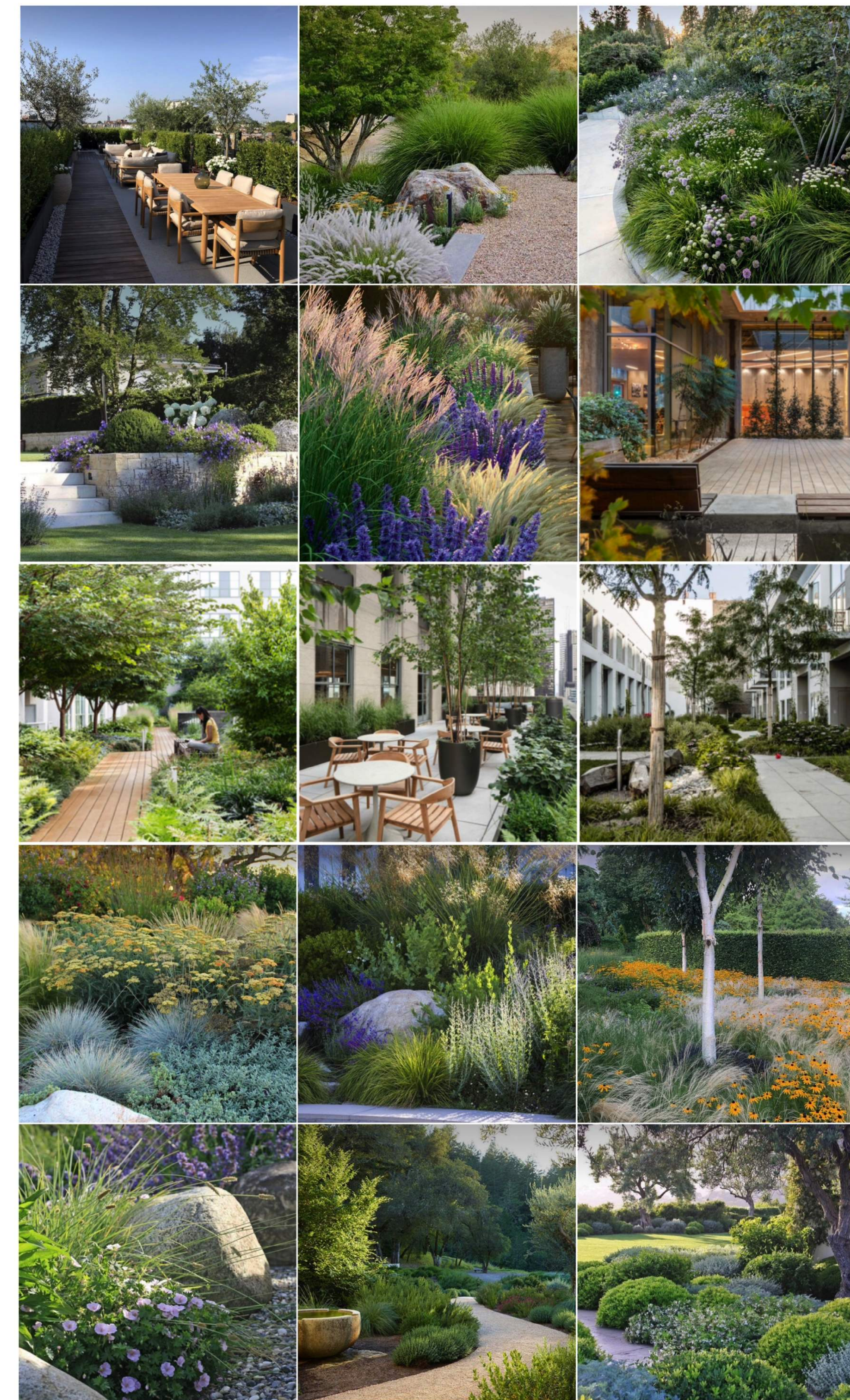
TOWNHOUSE LINEAR GARDEN



TOWNHOUSE COMPLEX ENTRANCE



STREET CORNER PUBLIC REALM/BUILDING ACCESS



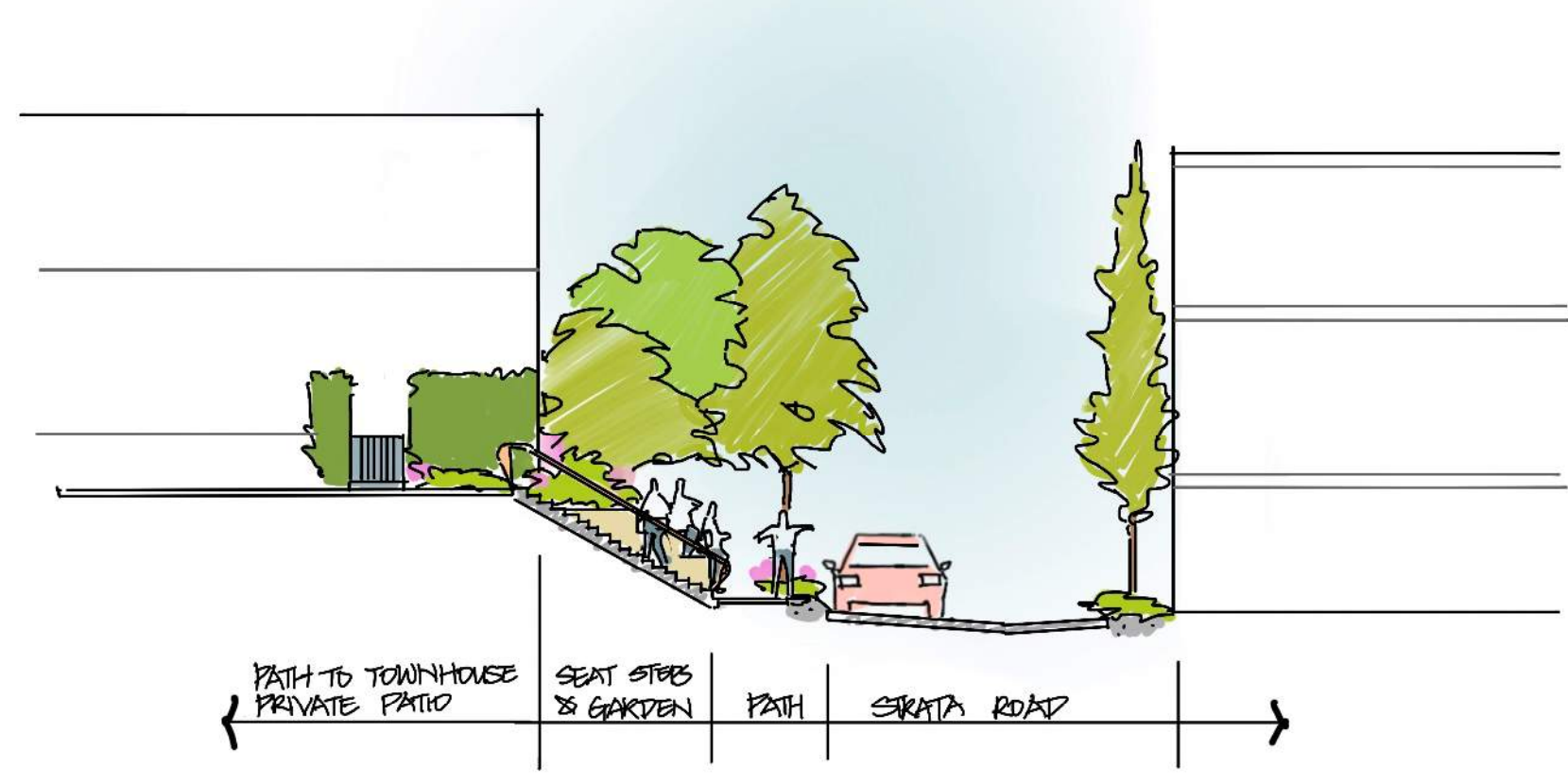
ISSUED FOR DP	2023-07-10
REV DESCRIPTION	DATE
DATE	2023-07-10
PROJECT NUMBER	LA02
DRAWN BY	
CHECKED BY	JZ

NORTH SCALE : 1:300

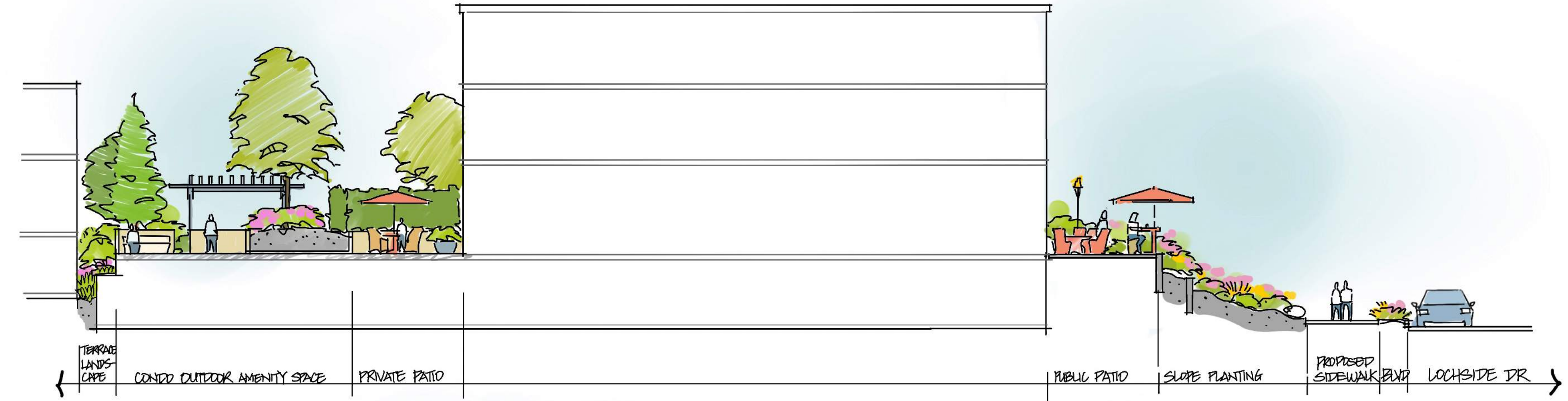
PROJECT  
**CEDARWOOD**  
MULTI-FAMILY DEVELOPMENT  
9522 LOCHSIDE DRIVE, SIDNEY, BC

DRAWING TITLE  
**PRECEDENT IMAGE  
DESIGN SKETCHES**

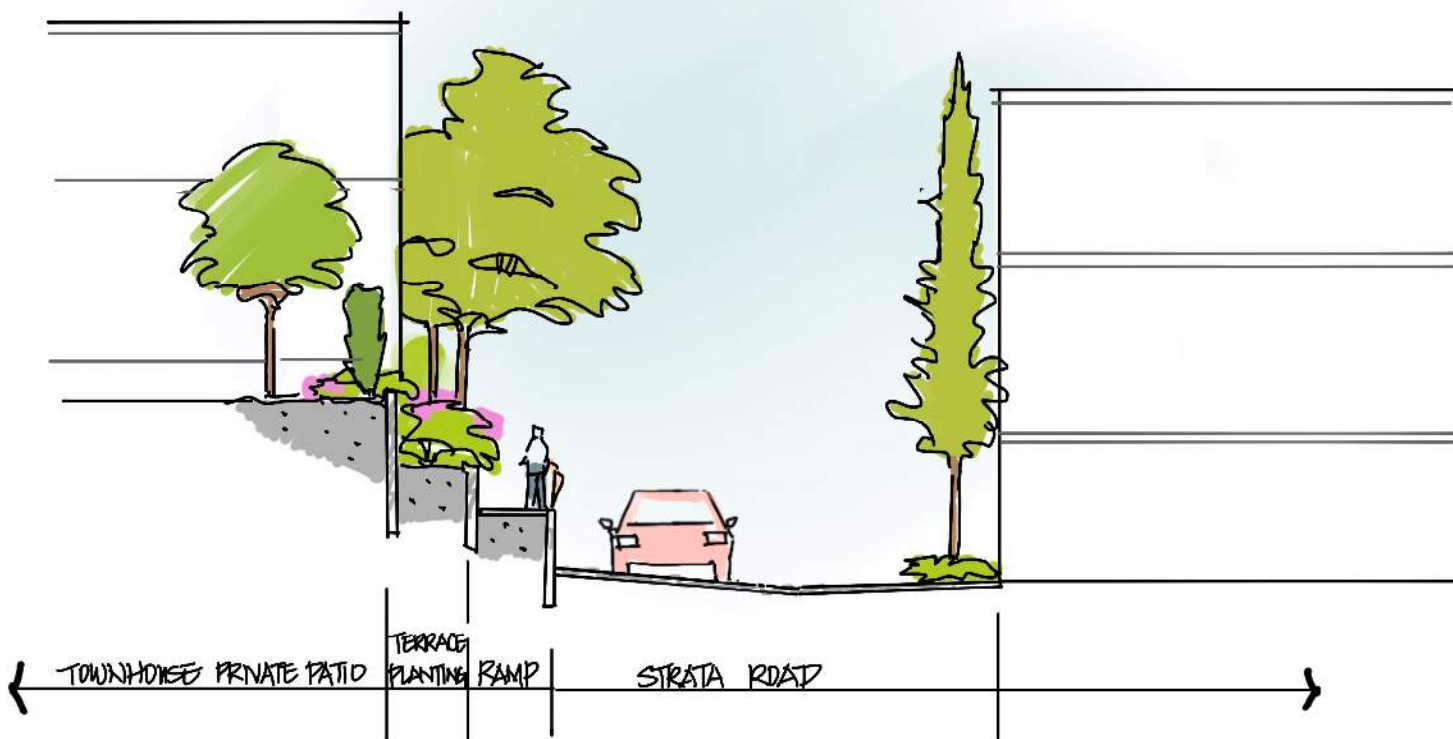
DRAWING No.



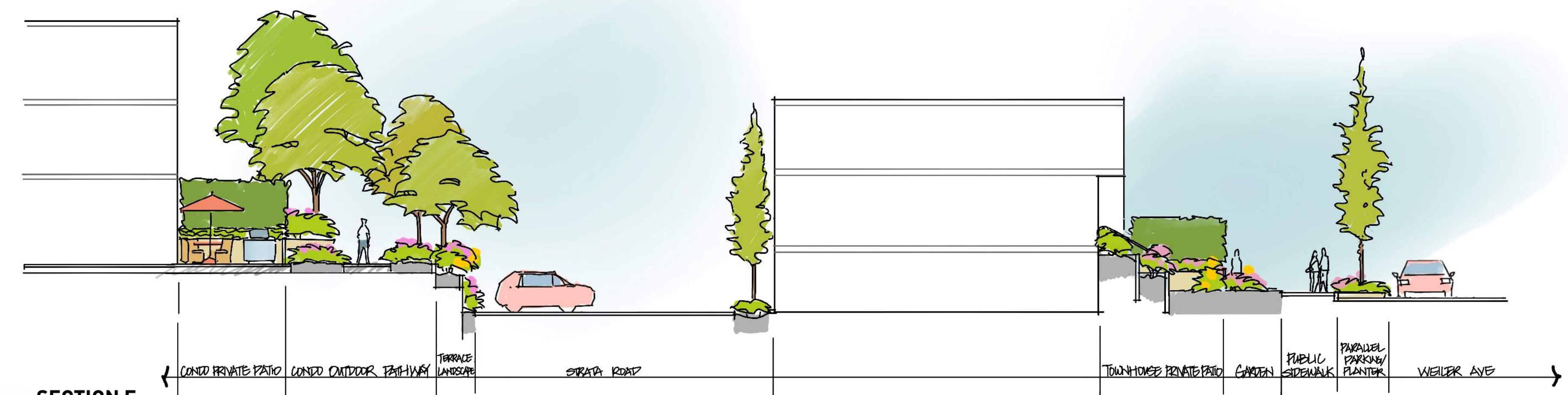
SECTION A



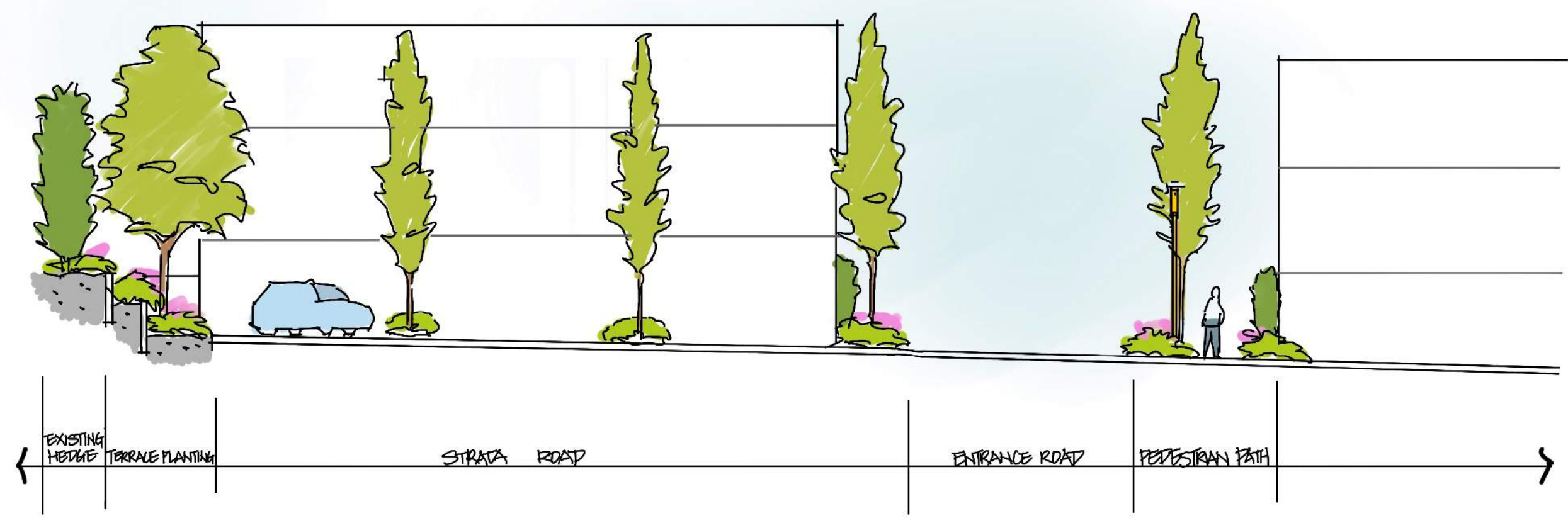
SECTION D



SECTION B



SECTION E



SECTION C



ISSUED FOR DP	2023-07-10
REV DESCRIPTION	DATE
DATE	2023-07-10
PROJECT NUMBER	LA02
DRAWN BY	
CHECKED BY	JZ

**NORTH** SCALE : 1:300

PROJECT  
**CEDARWOOD**  
MULTI-FAMILY DEVELOPMENT  
9522 LOCHSIDE DRIVE, SIDNEY, BC

DRAWING TITLE  
**ILLUSTRATIVE SECTIONS**

DRAWING No.  
**L0.3**

WEILER AVENUE

LOCHSIDE DRIVE



**LOT 02 TOWNHOUSE COMMON AMENITY AREA IS 806 SQ.M (8676 SQ.FT) IN TOTAL**

ISSUED FOR DP	2023-07-10
REV DESCRIPTION	DATE
DATE	2023-07-10
PROJECT NUMBER	LA02
DRAWN BY	
CHECKED BY	JZ



NORTH

SCALE : 1:300

PROJECT

**CEDARWOOD**

MULTI-FAMILY DEVELOPMENT

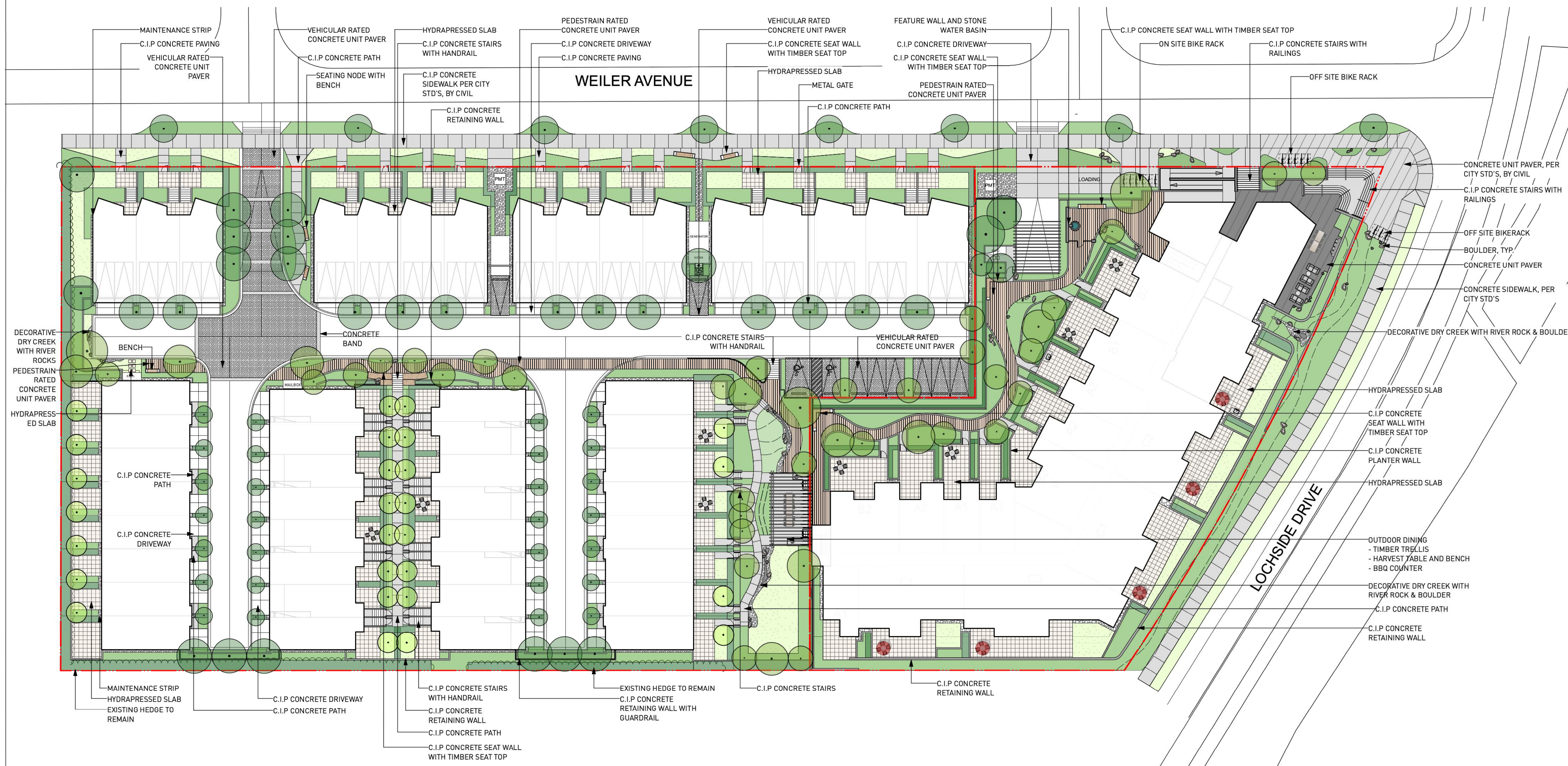
9522 LOCHSIDE DRIVE, SIDNEY, BC

DRAWING TITLE

**TOWNHOUSE  
COMMON  
AMENITY AREA**

DRAWING No.

**L0.4**



### LAYOUT AND MATERIALS GENERAL NOTES

- DO NOT SCALE DRAWING. LAYOUT AS PER DIMENSIONS NOTED ON LANDSCAPE PLANS. REPORT ANY DISCREPANCIES TO CONSULTANT FOR REVIEW AND RESPONSE.
- LAYOUT AND MATERIALS DRAWINGS ARE TO BE READ IN CONJUNCTION WITH LANDSCAPE SPECIFICATIONS.
- LANDSCAPE DRAWINGS ARE TO BE READ IN CONJUNCTION WITH ARCHITECTURAL AND ENGINEERING DRAWINGS. REPORT ANY DISCREPANCIES TO CONSULTANT FOR REVIEW AND RESPONSE.
- VERIFY ALL DIMENSIONS WITH FIELD CONDITIONS. REPORT ANY DISCREPANCIES TO CONSULTANT FOR REVIEW AND RESPONSE.
- EXTERIOR LIGHTING SHOWN ON LANDSCAPE PLANS IS FOR REFERENCE ONLY. LIGHTING INFORMATION REFERENCED ON LANDSCAPE DRAWINGS IS TO BE READ IN CONJUNCTION WITH ELECTRICAL ENGINEER'S DRAWINGS.
- REFERENCE CIVIL ENGINEER'S DRAWINGS FOR LAYOUT AND GRADING OF ROAD CURBS AND GUTTERS.

ISSUED FOR DP	2023-07-10
REV DESCRIPTION	DATE
DATE	2023-07-10
PROJECT NUMBER	LA02
DRAWN BY	
CHECKED BY	JZ



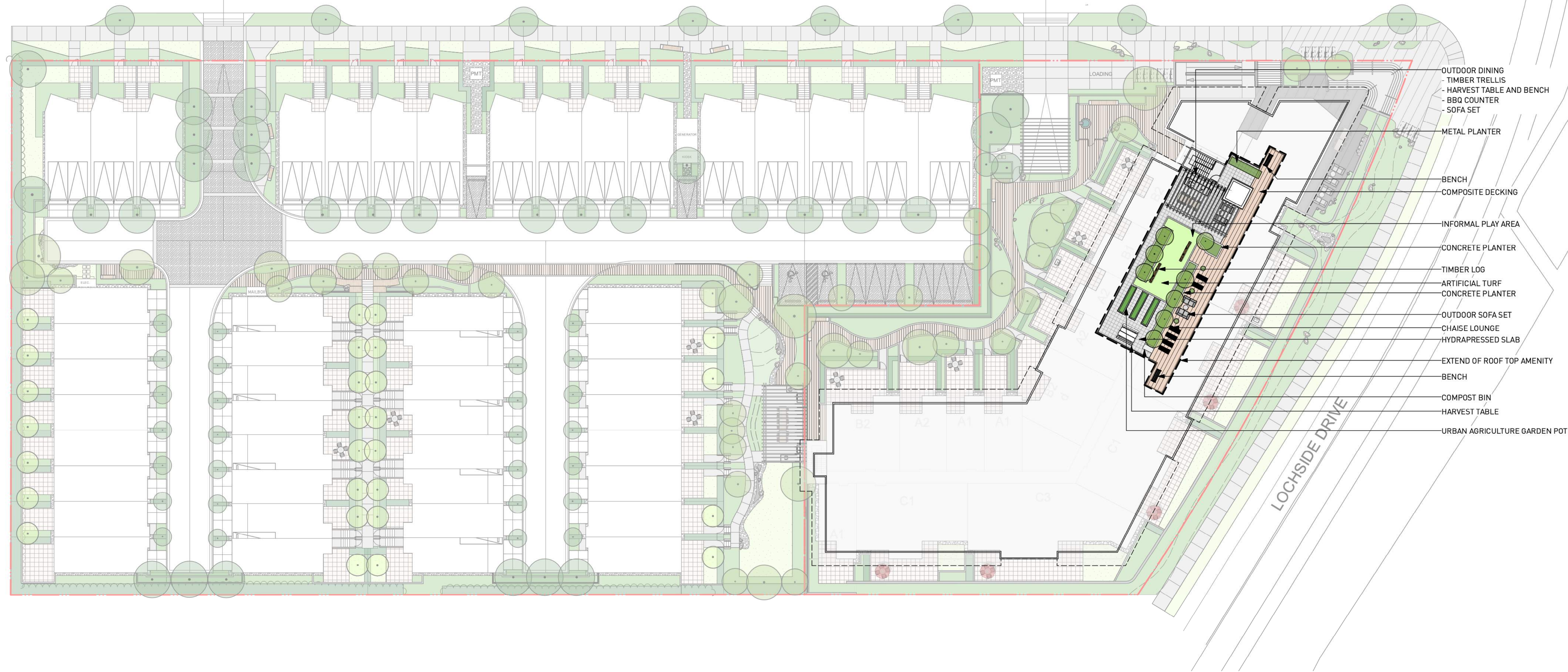
SCALE : 1:300

PROJECT  
**CEDARWOOD**  
MULTI-FAMILY DEVELOPMENT  
9522 LOCHSIDE DRIVE, SIDNEY, BC

DRAWING TITLE  
**LAYOUT &  
MATERIAL PLAN**  
GROUND LEVEL

DRAWING No.  
**L1.0**

WEILER AVENUE



ISSUED FOR DP	2023-07-10
REV DESCRIPTION	DATE

DATE	2023-07-10
------	------------

PROJECT NUMBER	LA02
----------------	------

DRAWN BY	
----------	--

CHECKED BY	JZ
------------	----



SCALE : 1:300

PROJECT

**CEDARWOOD**

MULTI-FAMILY DEVELOPMENT

9522 LOCHSIDE DRIVE, SIDNEY, BC

DRAWING TITLE

**LAYOUT &  
MATERIAL PLAN**

CONDO ROOF LEVEL

DRAWING No.

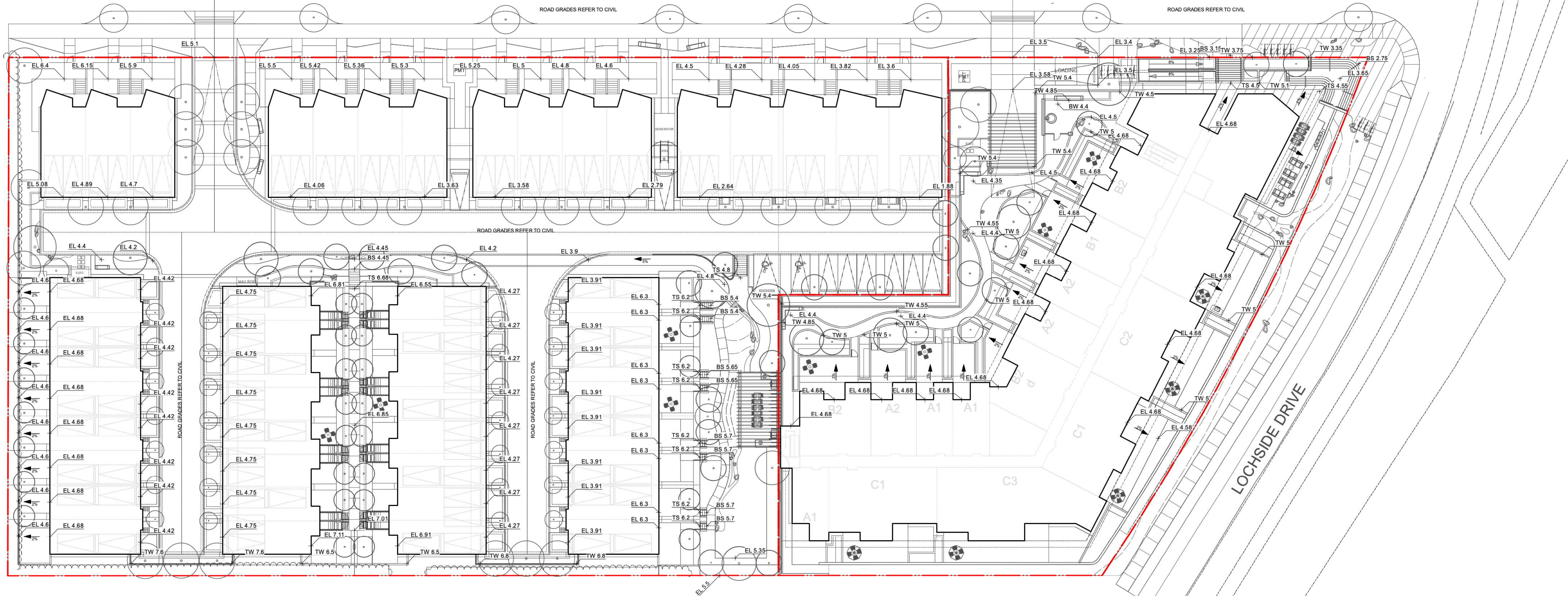
**L1.1**

**LAYOUT AND MATERIALS GENERAL NOTES**

1. DO NOT SCALE DRAWING. LAYOUT AS PER DIMENSIONS NOTED ON LANDSCAPE PLANS. REPORT ANY DISCREPANCIES TO CONSULTANT FOR REVIEW AND RESPONSE.
2. LAYOUT AND MATERIALS DRAWINGS ARE TO BE READ IN CONJUNCTION WITH LANDSCAPE SPECIFICATIONS.
3. LANDSCAPE DRAWINGS ARE TO BE READ IN CONJUNCTION WITH ARCHITECTURAL AND ENGINEERING DRAWINGS. REPORT ANY DISCREPANCIES TO CONSULTANT FOR REVIEW AND RESPONSE.
4. VERIFY ALL DIMENSIONS WITH FIELD CONDITIONS. REPORT ANY DISCREPANCIES TO CONSULTANT FOR REVIEW AND RESPONSE.
5. EXTERIOR LIGHTING SHOWN ON LANDSCAPE PLANS IS FOR REFERENCE ONLY. LIGHTING INFORMATION REFERENCED ON LANDSCAPE DRAWINGS IS TO BE READ IN CONJUNCTION WITH ELECTRICAL ENGINEER'S DRAWINGS.
6. REFERENCE CIVIL ENGINEER'S DRAWINGS FOR LAYOUT AND GRADING OF ROAD CURBS AND GUTTERS.

WEILER AVENUE

LOCHSIDE DRIVE



**GRADING GENERAL NOTES**

- REFER TO ARCHITECTURAL PLANS, SECTIONS AND ELEVATIONS FOR TOP OF SLAB ELEVATIONS. SLAB ELEVATIONS INDICATED ON LANDSCAPE DRAWINGS ARE FOR REFERENCE ONLY. REPORT ANY DISCREPANCIES TO CONSULTANT FOR REVIEW AND RESPONSE.
- CONFIRM ALL EXISTING GRADES PRIOR TO CONSTRUCTION. REPORT ANY DISCREPANCIES TO CONSULTANT FOR REVIEW AND RESPONSE.
- GROWING MEDIUM DEPTHS ON ARCHITECTURAL SLAB ARE NOT TO EXCEED THOSE SPECIFIED IN SPECIFICATIONS. REPORT ANY DISCREPANCIES TO CONSULTANT FOR REVIEW AND RESPONSE.
- SLAB DRAINS AND PLANTER SLAB DRAINS ARE SHOWN FOR REFERENCE ONLY AND ARE TO BE READ IN CONJUNCTION WITH MECHANICAL ENGINEERING DRAWINGS. REPORT ANY DISCREPANCIES TO CONSULTANT FOR REVIEW AND RESPONSE.
- UNLESS OTHERWISE NOTED ALL DRAINS LOCATED IN LAWN OR PLANTED AREAS TO BE COMPLETE WITH INSPECTION CHAMBER AND CLEANOUT AS DETAILED ON LANDSCAPE DRAWINGS.
- UNLESS OTHERWISE NOTED PROVIDE A MINIMUM SLOPE OF 2% ON ALL HARD AND SOFT LANDSCAPE AREAS TO ENSURE POSITIVE DRAINAGE AWAY FROM BUILDINGS OR TO DRAINAGE STRUCTURES.
- UNLESS OTHERWISE NOTED MAXIMUM SLOPE OF SOFT LANDSCAPE AREAS TO BE 3:1 (33%). REPORT ANY DISCREPANCIES TO CONSULTANT FOR REVIEW AND RESPONSE.
- UNLESS OTHERWISE NOTED PROVIDE A MAXIMUM SLOPE OF 5% ON ALL HARD LANDSCAPE AREAS. REPORT ANY DISCREPANCIES TO CONSULTANT FOR REVIEW AND RESPONSE.
- TOP OF CURB ELEVATIONS ARE SHOWN FOR REFERENCE ONLY. REFER TO CIVIL DRAWINGS FOR CURB ELEVATIONS.
- TIE INTO EXISTING ELEVATIONS AT EXTENT OF WORK CLEAN AND FLUSH. REPORT ANY DISCREPANCIES TO CONSULTANT FOR REVIEW AND RESPONSE.

**GRADING LEGEND**

	Existing Elevation
	Proposed Elevation
	Finished Floor Elevation
	Proposed Top of Wall Elevation
	Proposed Bottom of Wall Elevation
	Proposed Top of Stair Elevation
	Proposed Bottom of Stair Elevation
	Proposed Top of Curb Elevation
	Proposed Bottom of Curb Elevation
	Proposed Top of Ramp Elevation
	Proposed Bottom of Ramp Elevation

**NOTE: CONFIRM DRAIN LOCATIONS WITH MECHANICAL, CIVIL AND ARCH DRAWINGS. REPORT ANY DISCREPANCIES.**

ISSUED FOR DP	2023-07-10
REV DESCRIPTION	DATE
DATE	2023-07-10
PROJECT NUMBER	LA02
DRAWN BY	
CHECKED BY	JZ

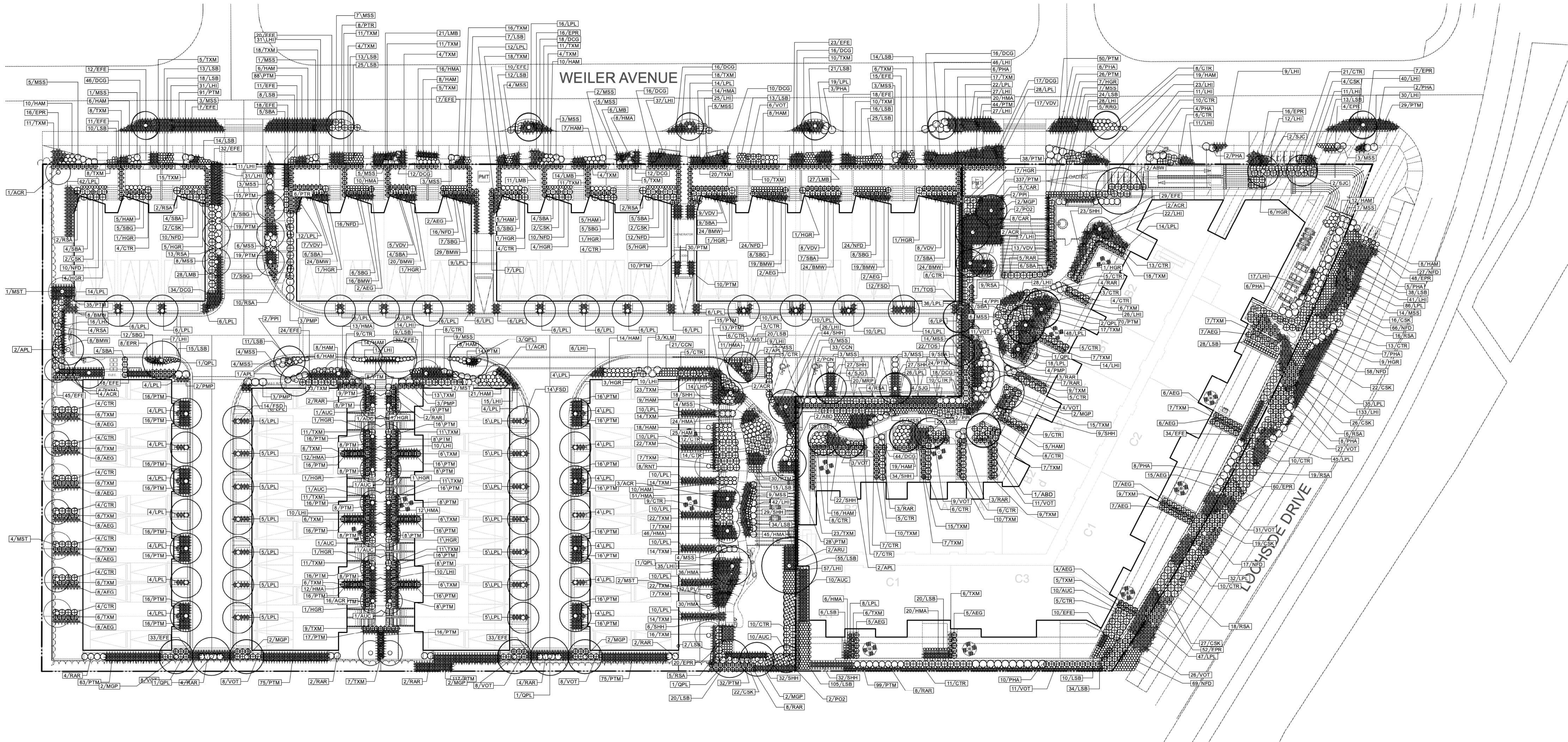
NORTH SCALE : 1:300

PROJECT  
**CEDARWOOD**  
MULTI-FAMILY DEVELOPMENT  
9522 LOCHSIDE DRIVE, SIDNEY, BC

DRAWING TITLE  
**GRADING PLAN**  
GROUND LEVEL

DRAWING No.  
**L2.0**





- PLANTING GENERAL NOTES**
- ALL PLANTS ARE TO CONFORM TO THE STANDARD SPECIFIED IN THE LATEST EDITION OF THE CANADIAN LANDSCAPE STANDARD. THE STANDARD IS PUBLISHED BY THE CANADIAN SOCIETY OF LANDSCAPE ARCHITECTS AND CANADIAN NURSERY LANDSCAPE ASSOCIATION.
  - SEARCH AREA FOR PLANT MATERIAL IS TO INCLUDE ALL OF WESTERN NORTH AMERICA.
  - PLANT MATERIAL SIZES SPECIFIED IN THE PLANT LIST ARE THE MINIMUM ACCEPTABLE SIZES FOR MATERIAL SUPPLIED FOR THIS PROJECT.
  - PLANTS WILL BE WELL ESTABLISHED AND UNIFORM IN SHAPE.
  - PLANTS WILL BE NURSERY GROWN UNLESS NOTED OTHERWISE.
  - THE CONTRACTOR SHALL PROVIDE A GROWING MEDIUM ANALYSIS FOR REVIEW BY THE CONSULTANT AS PER SPECIFICATIONS PRIOR TO THE START OF CONSTRUCTION. GROWING MEDIUM SUPPLIED TO THE SITE OR PLACED ON SITE PRIOR TO REVIEW BY THE CONSULTANT WILL BE REJECTED.
  - CONTRACTOR TO CONFIRM PLANT QUANTITIES ON DRAWING CORRESPOND TO THOSE INDICATED ON THE PLANT LIST. REPORT ANY DISCREPANCIES TO CONSULTANT FOR REVIEW AND RESPONSE.
  - PLANT LIST IS TO BE READ IN CONJUNCTION WITH SPECIFICATIONS.
  - PRIOR TO THE START OF CONSTRUCTION THE CONTRACTOR IS TO CONFIRM THE AVAILABILITY OF PLANT MATERIAL AS PER SPECIFICATIONS. PLANT SUBSTITUTIONS NOT CONFIRMED WITH THE CONSULTANT WILL BE REJECTED.

**Plant List**  
*ENTIRE SITE*

ID	Qty	Botanical Name	Common Name	Scheduled Size	Spacing	Remarks
<b>Trees</b>						
ACR	31	<i>Acer circinatum</i>	Vine Maple	3.0 m ht. (10'-0" ht.)	As Shown	B&B, Nursery grown, minimum 3 stems
ABD	6	<i>Acer palmatum 'Bloodgood'</i>	Bloodgood Japanese Maple	—	As Shown	B&B, Specimen and densely branched, no included bark
APL	12	<i>Acer palmatum 'Green'</i>	Green Japanese Maple	3.0 m ht. x 1.8 m w. (10' x 6')	As Shown	B&B, Specimen and densely branched, no included bark
ABW	2	<i>Acer rubrum 'Brandy Wine'</i>	Brandy Wine Red Maple	8 cm cal. (3" cal.)	As Shown	B&B, Uniform branching, dense tree, 7' (2.1 m) std.
ARU	2	<i>Acer rubrum 'Somerset'</i>	Somerset Red Maple	8 cm cal. (3" cal.)	As Shown	B&B, Uniform branching, dense tree, 7' (2.1 m) std.
FSD	40	<i>Fagus sylvatica 'Dawyki'</i>	Dawyki European Beech	8 cm cal. (3" cal.)	As Shown	B&B, Uniform branching, dense tree, 7' (2.1 m) std.
MGP	14	<i>Metasequoia glyptostroboides</i>	Dawn Redwood	2.4 m ht. (8'-0" ht.)	As Shown	B&B, Dense plant, well branched, fully branched to ground
PP1	10	<i>Parrotia persica 'Inge's Ruby Vase'</i>	'IRV' Persian Ironwood	5 cm cal. (2" cal.)	As Shown	B&B, Straight trunk, uniform branching, 5' (1.5 m) std.
POZ	4	<i>Picea omorika</i>	Serbian Spruce	2.4 m ht. (8'-0" ht.)	As Shown	B&B, Well branched, dense tree
PCN	2	<i>Pinus contorta</i>	Shore Pine	2.4 m ht. (8'-0" ht.)	As Shown	B&B, Specimen and dense tree, nursery grown
PTR	14	<i>Populus tremuloides</i>	Quaking Aspen	5 cm cal. (2" cal.)	As Shown	B&B, Well branched, dense tree, 5' (1.5 m) std., nursery
QPL	11	<i>Quercus palustris</i>	Pin Oak	8 cm cal. (3" cal.)	As Shown	B&B, Uniform branching, dense tree, 7' (2.1 m) std.
SJC	4	<i>Styrax japonica</i>	Japanese Snowbell	5 cm cal. (2" cal.)	As Shown	B&B, Uniform branching, dense tree, 6' (1.8 m) std.

<b>Shrubs</b>						
AEG	252	<i>Abelia Edward Goucher'</i>	Edward Goucher Abelia	—	—	Well established
AUC	74	<i>Arbutus unedo 'Compacta'</i>	Compact Strawberry Tree	#3 pot	90cm (36")	Well established
BMW	430	<i>Buxus microphylla 'Winter Gem'</i>	Winter Gem Boxwood	—	—	Well established
CTR	678	<i>Choisya ternata</i>	Mexican Orange Blossom	#3 pot	60 cm (24")	Well established
CSK	316	<i>Cornus sericea 'Kelseyii'</i>	Kelseyii Dogwood	#2 pot	60 cm (24")	Well established, nursery grown
HGR	156	<i>Hydrangea quercifolia</i>	Oak Leaf Hydrangea	#3 pot	75 cm (30")	Well established
KLM	6	<i>Kalmia latifolia 'Sarah'</i>	Sarah Mountain Laurel	#2 pot	107cm (42")	Well established
LPL	1988	<i>Lonicera pileata</i>	Privet Honeysuckle	#1 pot	45cm (18")	30 cm (12") spread
MST	24	<i>Magnolia stellata</i>	Star Magnolia	—	—	Well established
PHA	148	<i>Phyllostachys aurea</i>	Golden Bamboo	B&B	107cm (42")	Well established. Choose number of canes and height,
PMP	30	<i>Pinus mugo 'Pumilio'</i>	Dwarf Mugo Pine	#2 pot	110cm (42")	Well established
RAR	126	<i>Rhododendron 'Anna Rose Whitney'</i>	Anna Rose Whitney	#3 pot	90cm (36")	Well established
RSA	220	<i>Ribes sanguineum</i>	Flowering Currant	#3 pot	75 cm (30")	Well established, nursery grown
RNT	16	<i>Rosa nutkana</i>	Nootka Rose	#2 pot	60 cm (24")	Well established, nursery grown
RRG	10	<i>Rosa rugosa</i>	Rugosa Rose	#3 pot	90 cm (36")	Well established
SHH	682	<i>Sarcococca hookeriana humilis</i>	Himalayan Sarcococca	—	—	Well established
SBA	164	<i>Spiraea bumalda 'Anthony Waterer'</i>	Anthony Waterer Spiraea	#2 pot	75cm (30")	Well established
SBG	142	<i>Spiraea bumalda 'Goldflame'</i>	Goldflame Spiraea	#2 pot	60cm (24")	Well established
SJG	16	<i>Spiraea japonica 'Goldmound'</i>	Goldmound Spiraea	#2 pot	90cm (36")	Well established
TXM	1654	<i>Taxus x media 'H.M. Eddie'</i>	H.M. Eddie Yew	—	—	Well established, dense hedging plant / B & B
TOS	186	<i>Thuja occidentalis 'Smaragd'</i>	Emerald Cedar	1.2m	40 cm (16")	Well established, dense hedging plant / B & B
VOT	342	<i>Vaccinium ovatum 'Thunderbird'</i>	Thunderbird Evergreen Huckle	#3 pot	60 cm (24")	Well established, nursery grown
VDV	134	<i>Viburnum davidii</i>	David Viburnum	#2 pot	60 cm (24")	Well established
<b>Ground Cover</b>						
CCN	54	<i>Cornus canadensis</i>	Bunchberry	#1 pot	38cm (15")	8cm (3") height. Well established, nursery grown
EFE	442	<i>Euonymus fortunei 'Emerald Gaiety'</i>	Emerald Gaiety Wintercreeper	#1 pot	38 cm (15")	25cm (10") spread. Minimum 3 leads
LMB	107	<i>Ligularia muscarifolia 'Big Blue'</i>	Big Blue Lily-turk	#1 pot	30 cm (12")	Well established
MRP	20	<i>Mahonia nervosa</i>	Dwarf Oregon Grape	#1 pot	45cm (18")	Well established, nursery grown
PTM	2107	<i>Pachysandra terminalis</i>	Japanese Spurge	#1 pot	38 cm (15")	10cm (4") height
<b>Perennials</b>						
EPR	247	<i>Echinacea purpurea</i>	Purple Cone Flower	#1 pot	45 cm (18")	Well established
HAM	282	<i>Hosta 'August Moon'</i>	August Moon Hosta	#1 pot	60 cm (24")	Well established
LHI	1023	<i>Lavandula angustifolia 'Hidcote'</i>	Hidcote Lavender	#1 pot	40 cm (16")	Well established
LSB	726	<i>Leucanthemum superbum 'Becky'</i>	Becky Shasta Daisy	#1 pot	38 cm (15")	Well established
NFD	359	<i>Nepeta x faassenii 'Droopmore Blue'</i>	Droopmore Blue Catmint	#1 pot	38 cm (15")	Well established

ISSUED FOR DP	2023-07-10
REV DESCRIPTION	DATE
DATE	2023-07-10
PROJECT NUMBER	LA02
DRAWN BY	
CHECKED BY	JZ

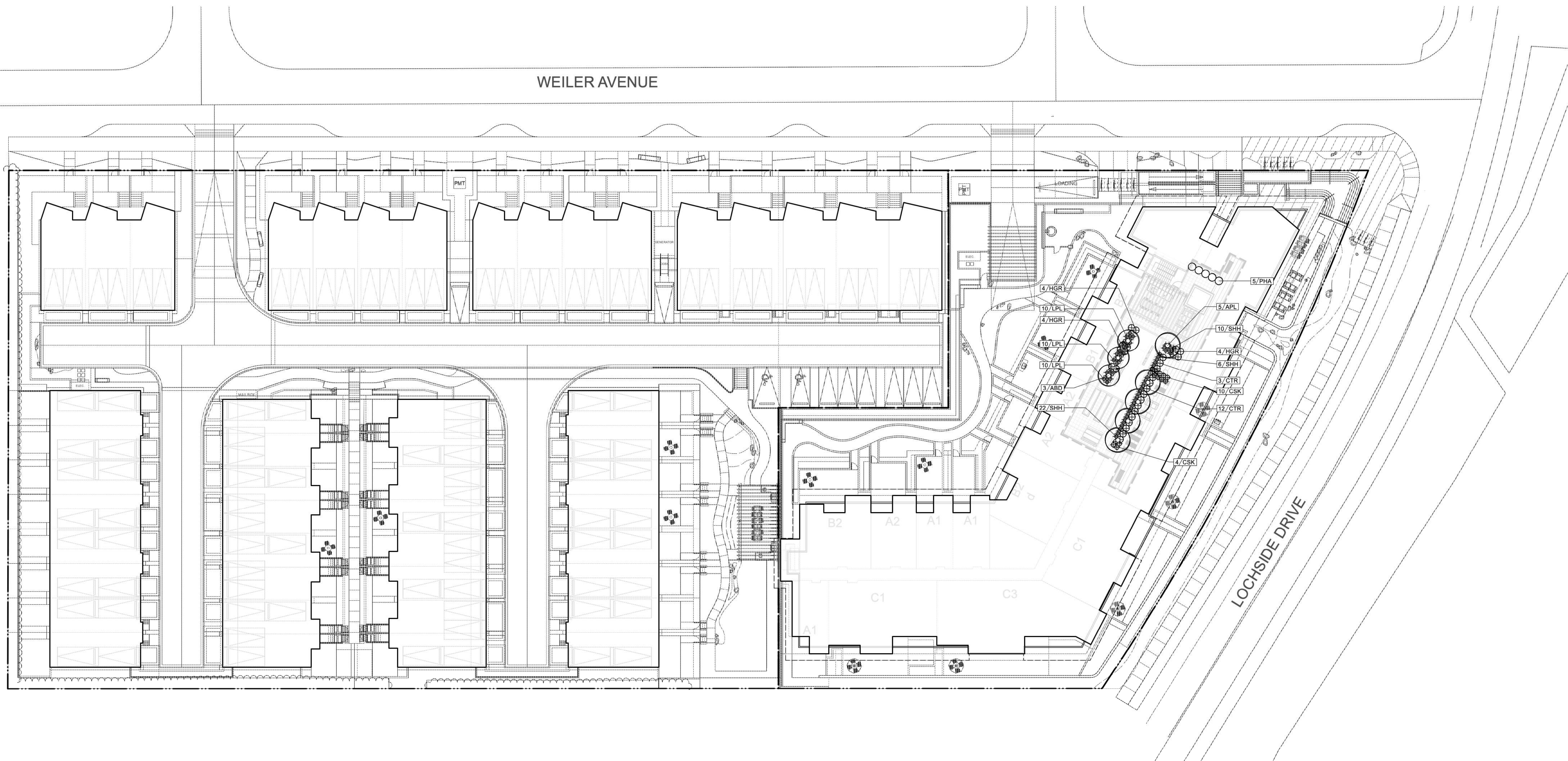
↑ NORTH  
SCALE : 1:300

PROJECT  
**CEDARWOOD**  
MULTI-FAMILY DEVELOPMENT  
9522 LOCHSIDE DRIVE, SIDNEY, BC  
DRAWING TITLE  
**PLANTING PLAN**  
GROUND LEVEL

DRAWING No.

**L3.0**

WEILER AVENUE



ISSUED FOR DP	2023-07-10
REV DESCRIPTION	DATE
DATE	2023-07-10
PROJECT NUMBER	LA02
DRAWN BY	
CHECKED BY	JZ

NORTH  
SCALE : 1:300

**PLANTING GENERAL NOTES**

- ALL PLANTS ARE TO CONFORM TO THE STANDARD SPECIFIED IN THE LATEST EDITION OF THE CANADIAN LANDSCAPE STANDARD. THE STANDARD IS PUBLISHED BY THE CANADIAN SOCIETY OF LANDSCAPE ARCHITECTS AND CANADIAN NURSERY LANDSCAPE ASSOCIATION.
- SEARCH AREA FOR PLANT MATERIAL IS TO INCLUDE ALL OF WESTERN NORTH AMERICA.
- PLANT MATERIAL SIZES SPECIFIED IN THE PLANT LIST ARE THE MINIMUM ACCEPTABLE SIZES FOR MATERIAL SUPPLIED FOR THIS PROJECT.
- PLANTS WILL BE WELL ESTABLISHED AND UNIFORM IN SHAPE.
- PLANTS WILL BE NURSERY GROWN UNLESS NOTED OTHERWISE.
- THE CONTRACTOR SHALL PROVIDE A GROWING MEDIUM ANALYSIS FOR REVIEW BY THE CONSULTANT AS PER SPECIFICATIONS PRIOR TO THE START OF CONSTRUCTION. GROWING MEDIUM SUPPLIED TO THE SITE OR PLACED ON SITE PRIOR TO REVIEW BY THE CONSULTANT WILL BE REJECTED.
- CONTRACTOR TO CONFIRM PLANT QUANTITIES ON DRAWING CORRESPOND TO THOSE INDICATED ON THE PLANT LIST. REPORT ANY DISCREPANCIES TO CONSULTANT FOR REVIEW AND RESPONSE.
- PLANT LIST IS TO BE READ IN CONJUNCTION WITH SPECIFICATIONS.
- PRIOR TO THE START OF CONSTRUCTION THE CONTRACTOR IS TO CONFIRM THE AVAILABILITY OF PLANT MATERIAL AS PER SPECIFICATIONS. PLANT SUBSTITUTIONS NOT CONFIRMED WITH THE CONSULTANT WILL BE REJECTED.

ID	Qty	Botanical Name	Common Name	Scheduled Size	Spacing	Remarks
<b>Trees</b>						
ACR	31	<i>Acer circinatum</i>	Vine Maple	3.0 m ht. (10'-0" ht.)	As Shown	B&B, Nursery grown, minimum 3 stems
ABD	6	<i>Acer palmatum</i> 'Bloodgood'	Bloodgood Japanese Maple	---	As Shown	B&B, Specimen and densely branched, no included bark
APL	12	<i>Acer palmatum</i> 'Green'	Green Japanese Maple	3.0 m ht. x 1.8 m w. (10' As Shown)	As Shown	B&B, Specimen and densely branched, no included bark
ABW	2	<i>Acer rubrum</i> 'Brandy Wine'	Brandy Wine Red Maple	8 cm cal. (3" cal.)	As Shown	B&B, Uniform branching, dense tree, 7' (2.1 m) std.
ARU	2	<i>Acer rubrum</i> 'Somerset'	Somerset Red Maple	8 cm cal. (3" cal.)	As Shown	B&B, Uniform branching, dense tree, 7' (2.1 m) std.
FSD	40	<i>Fagus sylvatica</i> 'Dawkyll'	Dawkyll European Beech	8 cm cal. (3" cal.)	As Shown	B&B, Uniform branching, dense tree, 7' (2.1 m) std.
MGP	14	<i>Metasequoia glyptostroboides</i>	Dawn Redwood	2.4 m ht. (8'-0" ht.)	As Shown	B&B, Dense plant, well branched, fully branched to grou
PPI	10	<i>Parrotia persica</i> 'Inge's Ruby Vase'	'IRV' Persian Ironwood	5 cm cal. (2" cal.)	As Shown	B&B, Straight trunk, uniform branching, 5' (1.5 m) std.
PCO	4	<i>Picea omorika</i>	Serbian Spruce	2.4 m ht. (8'-0" ht.)	As Shown	B&B, Well branched, dense tree
PCN	2	<i>Pinus contorta</i>	Shore Pine	2.4 m ht. (8'-0" ht.)	As Shown	B&B, Well branched, dense tree, nursery grown
PTR	14	<i>Populus tremuloides</i>	Quaking Aspen	5 cm cal. (2" cal.)	As Shown	B&B, Well branched, dense tree, 5' (1.5 m) std., nursery
QPL	11	<i>Quercus palustris</i>	Pin Oak	8 cm cal. (3" cal.)	As Shown	B&B, Uniform branching, dense tree, 7' (2.1 m) std.
SJC	4	<i>Styrax japonica</i>	Japanese Snowbell	5 cm cal. (2" cal.)	As Shown	B&B, Uniform branching, dense tree, 6' (1.8m) std.

ID	Qty	Botanical Name	Common Name	Scheduled Size	Spacing	Remarks
<b>Shrubs</b>						
AEG	252	<i>Abelia</i> 'Edward Goucher'	Edward Goucher Abelia	---	---	Well established
AUC	74	<i>Arbutus unedo</i> 'Compacta'	Compact Strawberry Tree	#3 pot	90cm (36")	Well established
BMW	430	<i>Buxus microphylla</i> 'Winter Gem'	Winter Gem Boxwood	---	---	Well established
CTR	678	<i>Choisya ternata</i>	Mexican Orange Blossom	#3 pot	60 cm (24")	Well established
CSK	316	<i>Cornus sericea</i> 'Kelseyii'	Kelseyii Dogwood	#2 pot	60 cm (24")	Well established, nursery grown
HGR	156	<i>Hydrangea quercifolia</i>	Oak Leaf Hydrangea	#3 pot	75 cm (30")	Well established
KLM	6	<i>Kalmia latifolia</i> 'Sarah'	Sarah Mountain Laurel	#2 pot	107cm (42")	Well established
LPL	1988	<i>Lonicera pileata</i>	Privet Honeysuckle	#1 pot	45cm (18")	30 cm (12") spread
MST	24	<i>Magnolia stellata</i>	Star Magnolia	---	---	Well established
PHA	148	<i>Phyllostachys aurea</i>	Golden Bamboo	B&B	107cm (42")	Well established. Choose number of canes and height, 4
PMP	30	<i>Pinus mugo</i> 'Pumilio'	Dwarf Mugo Pine	#2 pot	110cm (42")	Well established
RAR	126	<i>Rhododendron</i> 'Anna Rose Whitney'	Anna Rose Whitney	#3 pot	90cm (36")	Well established
RSA	220	<i>Ribes sanguineum</i>	Flowering Currant	#3 pot	75 cm (30")	Well established, nursery grown
RNT	16	<i>Rosa nutkana</i>	Nootka Rose	#2 pot	60 cm (24")	Well established, nursery grown
RRG	10	<i>Rosa rugosa</i>	Rugosa Rose	#3 pot	90 cm (36")	Well established
SHH	682	<i>Sarcococca hookeriana</i> humilis	Himalayan Sarcococca	---	---	Well established
SBA	164	<i>Spiraea bumalda</i> 'Anthony Waterer'	Anthony Waterer Spiraea	#2 pot	75cm (30")	Well established
SBG	142	<i>Spiraea bumalda</i> 'Goldflame'	Goldflame Spiraea	#2 pot	60cm (24")	Well established
SJG	16	<i>Spiraea japonica</i> 'Goldmound'	Goldmound Spiraea	#2 pot	90cm (36")	Well established
TXM	1654	<i>Taxus x media</i> 'H.M. Eddie'	H.M. Eddie Yew	---	---	Well established, dense hedging plant / B & B
TOS	186	<i>Thuja occidentalis</i> 'Smaragd'	Emerald Cedar	1.2m	40 cm (16")	Well established, dense hedging plant / B & B
VOT	342	<i>Vaccinium ovatum</i> 'Thunderbird'	Thunderbird Evergreen Huckle	#3 pot	60 cm (24")	Well established, nursery grown
VDV	134	<i>Viburnum davidii</i>	David Viburnum	#2 pot	60 cm (24")	Well established
<b>Ground Cover</b>						
CCN	54	<i>Cornus canadensis</i>	Bunchberry	#1 pot	38cm (15")	8cm (3") height. Well established, nursery grown
EFE	442	<i>Euonymus fortunei</i> 'Emerald Gaiety'	Emerald Gaiety Wintercreeper	#1 pot	38 cm (15")	25cm (10") spread. Minimum 3 leads
LMB	107	<i>Liriope muscari</i> 'Big Blue'	Big Blue Lily-turf	#1 pot	30 cm (12")	Well established
MRP	20	<i>Mahonia nervosa</i>	Dwarf Oregon Grape	#1 pot	45cm (18")	Well established, nursery grown
PTM	2107	<i>Pachysandra terminalis</i>	Japanese Spurge	#1 pot	38 cm (15")	10cm (4") height
<b>Perennials</b>						
EPR	247	<i>Echinacea purpurea</i>	Purple Cone Flower	#1 pot	45 cm (18")	Well established
HAM	282	<i>Hosta 'August Moon'</i>	August Moon Hosta	#1 pot	60 cm (24")	Well established
LHI	1023	<i>Lavandula angustifolia</i> 'Hidcote'	Hidcote Lavender	#1 pot	40 cm (16")	Well established
LSB	726	<i>Leucanthemum superbum</i> 'Becky'	Becky Shasta Daisy	#1 pot	38 cm (15")	Well established
NFD	359	<i>Nepeta x faassenii</i> 'Droppore Blue'	Droppore Blue Catmint	#1 pot	38 cm (15")	Well established

PROJECT  
**CEDARWOOD**  
MULTI-FAMILY DEVELOPMENT  
9522 LOCHSIDE DRIVE, SIDNEY, BC

DRAWING TITLE  
**PLANTING PLAN**  
**CONDO ROOF LEVEL**

DRAWING No.  
**L3.1**