

Double Sided Sign
ACP / Alupanel

Resurface of existing pylon sign located at driveway of 9522 Lochside Drive.

Use existing steel structure and body of sign cabinet to mount new wood framing and alupanel / ACP sheets to.

Round tubes will be removed long with the roof of the sign.

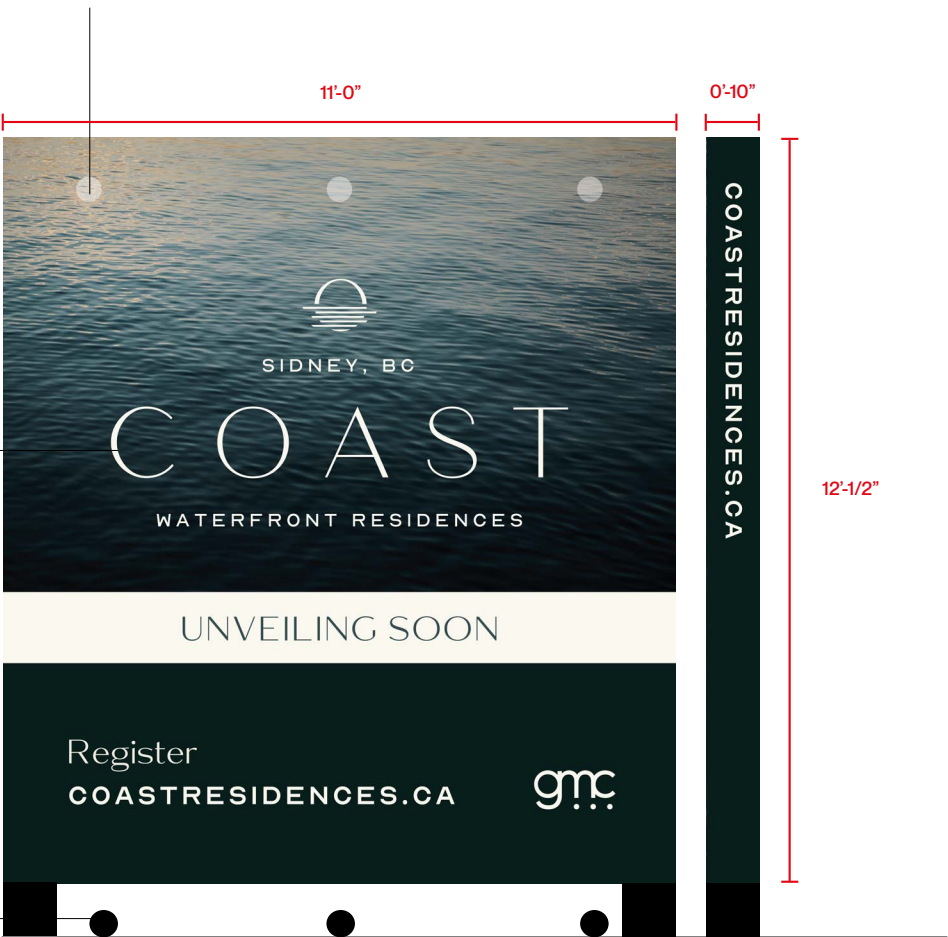
Dimensional Lettering

.5" thick acrylic, mounted to ACP
"COAST"
.25" thick acrylic, mounted to ACP
Icon, "Sidney, BC", "WATERFRONT
RESIDENCES", GMC logo

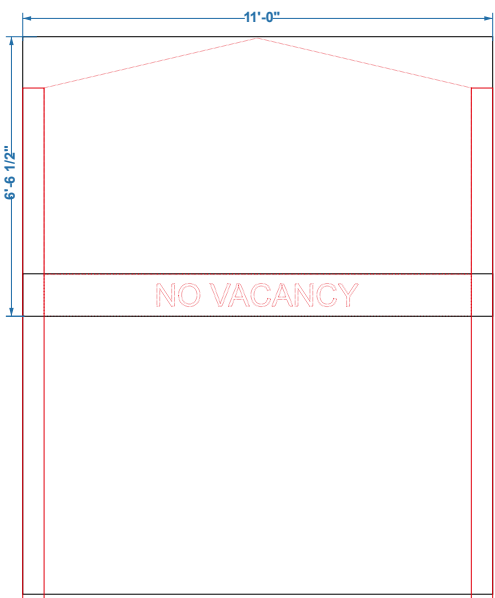


LED Landscape Spotlighting
Three (3) heads each side, installed in planter bed

LED Wall Mount Lighting
Three (3) heads each side, mounted to ACP



Existing Structure
(To remain)



Existing Sign Display Area
(Dimensions)

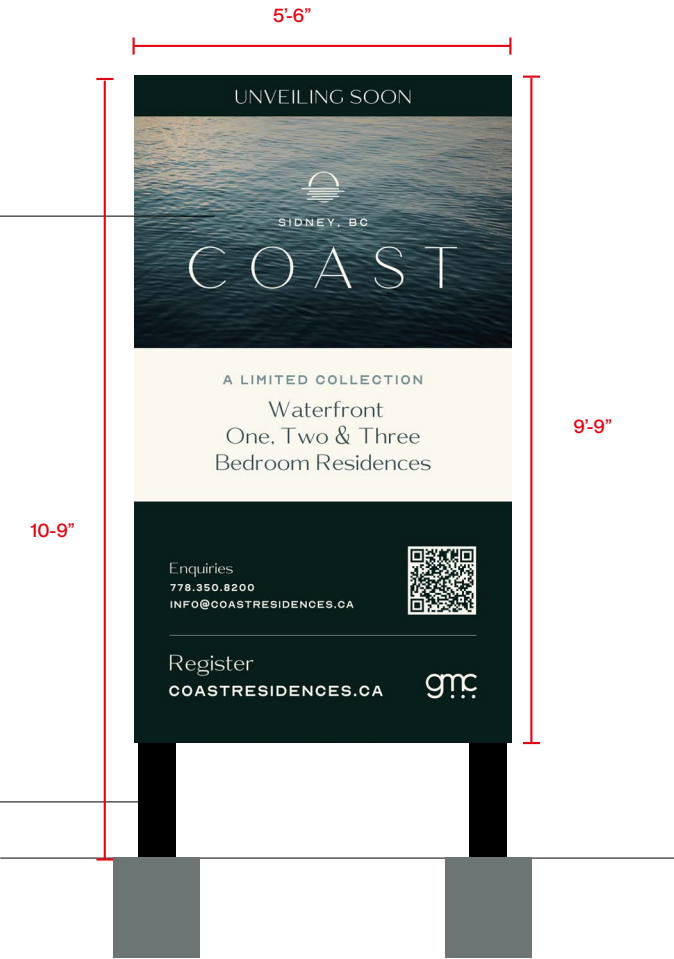
See pages following for location

Single Sided Temporary Sign
ACP / Alupanel

Single-sided temporary sign, mounted on 4 by 4 posts
located in the northeast corner of the 9522 Lochside site.

Dimensional Lettering
.5" thick acrylic, mounted to ACP
"COAST"
.25" thick acrylic, mounted to ACP
"SIDNEY, BC", iconmark

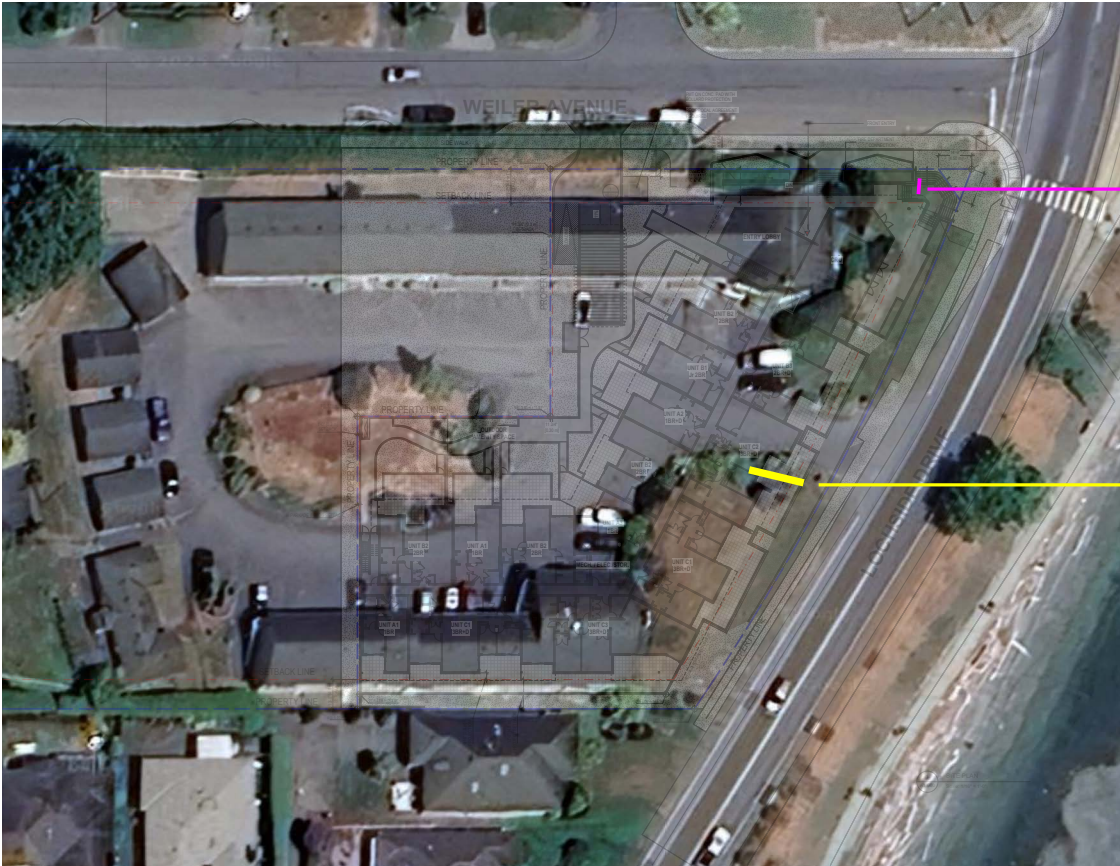
4" by 4" Posts
Cemented into ground



Sign Structure
(As installed)



See pages following for location



Temporary Sign
(As Installed)
> 9.8' off property lines

Freestanding Sign
(Existing Location)