

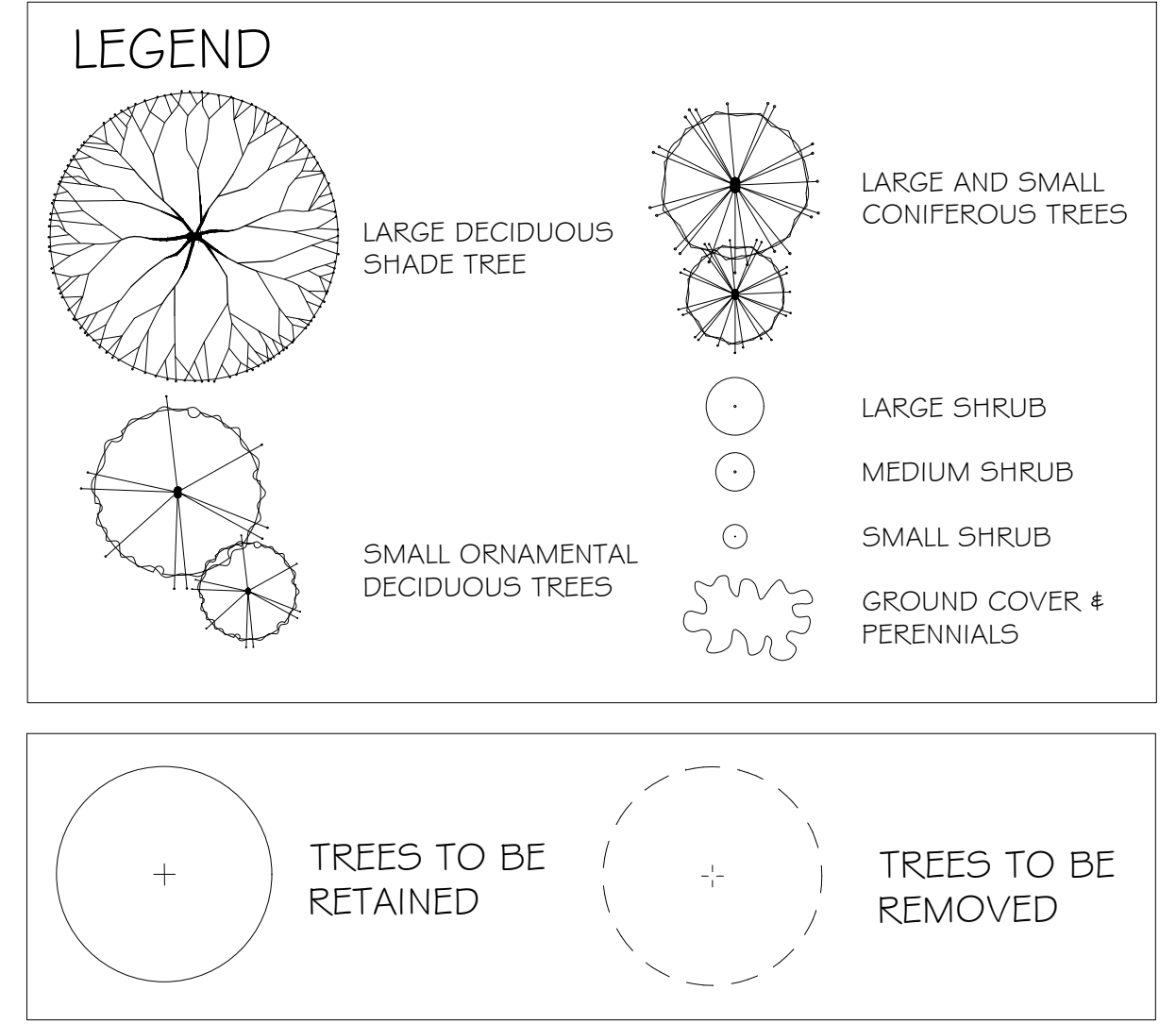
PAVER SCHEDULE

01 TYPE: VENETIAN COBBLE (PERMEABLE PAVER)
COLOUR: COPPER CANYON
PATTERN: RUNNING BOND
SIZE: 6"x12"

02 TYPE: ORIGINS 12
COLOUR: VICTORIAN
PATTERN: PATTERN C
SIZE: 12"x18", 12"x12", 6"x12"

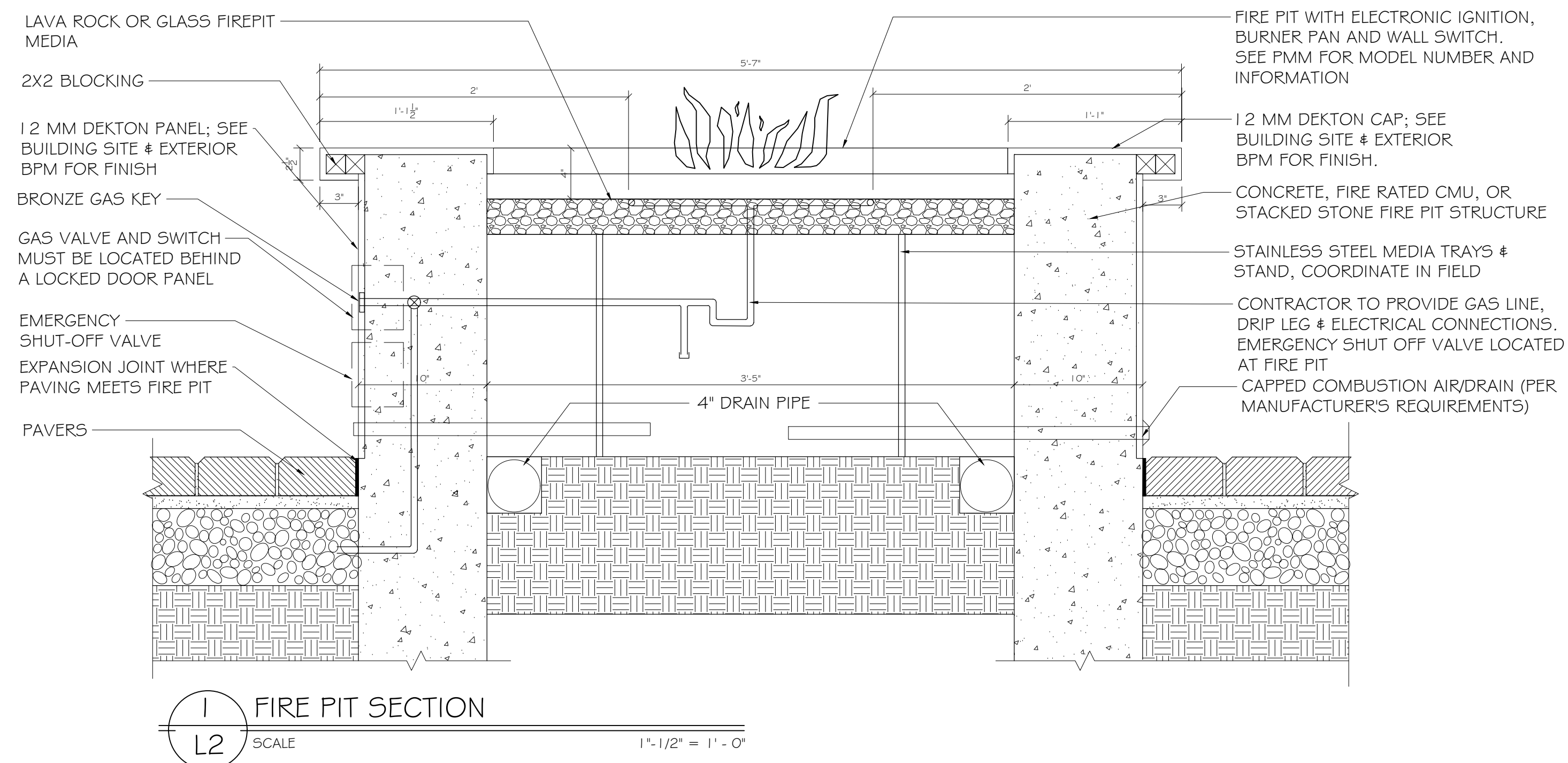
03 TYPE: CORTEX
COLOUR: COPPER CANYON
PATTERN: 45° STACK BOND
SIZE: 24"x24"

SUGGESTED PLANT LIST				
Key	Common Name	Latin Name	Size	
Trees	POAK	Pink Oak	<i>Quercus palustris</i>	6cm Cal
	RMAP	Columar Red Maple	<i>Acer rubrum</i> var. 'Columar'	7cm Cal
	PALM	Windmill Palm	<i>Trachycarpus fortunei</i>	2-5m HT
	PDOG	Pacific Flowering Dogwood	<i>Cornus nuttallii</i> var. 'Edulis White Wonder'	6cm Cal
	VMAP	Vine Maple	<i>Acer circinnatum</i> (clump form)	2m HT
	JMAP	Red Japanese Maple	<i>Acer palmatum</i> var. 'Bloodgood'	6cm Cal
	KOUS	Kauna Dogwood	<i>Kauna Dogwood</i>	6cm Cal
	TSUG	Western Hemlock	<i>Tsuga heterophylla</i>	2-5m HT
	KAT	Katana Tree	<i>Coniothyrium japonicum</i>	7cm Cal
	WRC	Western Red Cedar	<i>Thuja plicata</i> var. 'Excelsa'	3m HT
	SEKB	Serbian Spruce	<i>Picea omorika</i>	2-2m HT
	PRUN	Flowering Cherry	<i>Prunus yedoensis</i> var. 'Aukbone'	6cm Cal
Large Shrubs	SMAG	Star Magnolia	<i>Magnolia stellata</i> var. 'Royal Star'	#5 Pot
	MARI	Oregon Grape	<i>Mahonia aquifolium</i>	#5 Pot
	PHOT	Photinia	<i>Photinia fraser</i> var. 'Red Robin'	#5 Pot
	NINE	Ninebark	<i>Physocarpus opulifolius</i> var. 'Dabidi'	#5 Pot
	PIER	Lily of the Valley Shrub	<i>Pieris japonica</i> var. 'Forest Flame'	#5 Pot
	MOCK	Mock Orange	<i>Philadelphus lewisii</i>	#5 Pot
	LRHA	Rhododendron	<i>Rhododendron</i> var. 'Taurus'	#5 Pot
	LRHB	Rhododendron	<i>Rhododendron</i> var. 'Pink Wallpaper'	#5 Pot
	PHOR	New Zealand Flax	<i>Phormium tenax</i> var. 'Vandagata'	#5 Pot
Medium Shrubs	DAZA	Deciduous Azalea	<i>Azalea x Western Lights'</i>	#2 Pot
	RDOG	Red Twig Dogwood	<i>Cornus stolonifera</i>	#2 Pot
	SALA	Sabal	<i>Gaillardia stricta</i>	#1 Pot
	WIEG	White and Rosea Weigela	<i>Weigela florida</i> var. 'White & Rosea'	#1 Pot
	MRHA	Rhododendron	<i>Rhododendron</i> var. 'Uniqua'	#2 Pot
	RIBE	Red Flowering Currant	<i>Ribes sanguineum</i> var. 'King Edward'	#2 Pot
	MRHB	Rhododendron	<i>Rhododendron</i> var. 'Christmas Cheer'	#2 Pot
	VACC	Mountain Blueberry	<i>Vaccinium ovatum</i>	#2 Pot
	MAHC	Compact Oregon Grape	<i>Mahonia aquifolium</i> var. 'Compacta'	#5 Pot
	DVIB	David Viburnum	<i>Viburnum davidii</i>	#5 Pot
	PIEV	Lily of the Valley Shrub	<i>Pieris japonica</i> var. 'Valley Valentine'	#5 Pot
	YDOG	Yard's Yellow Twig Dogwood	<i>Cornus alba</i> var. 'Yard's Yellow'	#2 Pot
	ALAT	Winged Spurred Broom	<i>Elyonurus alata</i> var. 'Fireball'	#2 Pot
	ABE	Glossy Abelia	<i>Abelia x grandiflora</i>	#2 Pot
	FLAX	New Zealand Flax	<i>Phormium tenax</i> var. 'Bronze Beauty'	#5 Pot
Small Shrubs	AZAW	Evergreen Azalea	<i>Azalea japonica</i> var. 'Gumpo White'	#2 Pot
	ADOG	Arctic Pine Dogwood	<i>Cornus sericea</i> var. 'Arctic Pine'	#1 Pot
	SRGF	Gold Flame Spiraea	<i>Spiraea bumalda</i> var. 'Gold Flame'	#1 Pot
	HYD	Hydrangea	<i>Hydrangea macrophylla</i> var. 'Forever Pink'	#1 Pot
	EUCF	Creeeping Euonymus	<i>Euonymus fortunei</i> var. 'Emerald Gaiety'	#2 Pot
	AZAP	Pink Evergreen Azalea	<i>Azalea japonica</i> var. 'Gumpo Pink'	#2 Pot
	DWTF	Dwarf Forsythia	<i>Forsythia japonica</i> var. 'Dwarfwhite'	#2 Pot
	LEUC	Coast Leucothoe	<i>Leucothoe axillaris</i>	#1 Pot
	POLY	Sword Fern	<i>Polystichum muntonii</i>	#2 Pot
	DWRH	Dwarf Rhododendron	<i>Rhododendron</i> var. 'Dwarf'	#2 Pot
	SARC	Sweetbox	<i>Sarcococca humilis</i>	#1 Pot
	SPRH	Dwarf Spiral Wreath	<i>Spiraea bumalda</i> var. 'Shirobana'	#1 Pot
	ILEX	False Holly	<i>Ilex ornata convexa</i>	#2 Pot
	SNOW	Snowberry	<i>Symphoricarpos albus</i>	#2 Pot
	DWMP	Dwarf Mugo Pine	<i>Pinus mugo pumilio</i>	#2 Pot
Vines	ARM	Evergreen Clematis	<i>Clematis armandii</i>	#5 Pot
	CLEM	Montana Clematis	<i>Clematis montana</i> var. 'Jackmani' 4 'Elizabeth'	#1 Pot
	LONI	Honeysuckle	<i>Lonicera</i>	#1 Pot
Ground Covers	AJUG	Bugleweed	<i>Ajuga reptans</i> var. 'Burgundy Glow'	#5P4 Pot
	BEAR	Bearberry	<i>Arctostaphylos uva-ursi</i> var. 'Vancouver Jade'	#5P4 Pot
	CORN	Bunchberry	<i>Cornus canadensis</i>	#5P4 Pot
	GALL	Wine and Roses Galium	<i>Galium procumbens</i>	#5P4 Pot
	BERG	Bergenia	<i>Bergenia coccinea</i> var. 'Bressingham Ruby'	#5P4 Pot
	VITI	Mountain Cranberry	<i>Vitis idaea musc</i>	#5P4 Pot
	GLOR	Creeeping California Lilac	<i>Ceanothus glaucus</i>	#5P4 Pot
Perennials	ASTI	Astilbe	<i>Astilbe chinensis</i> var. 'Pumila'	#5P5 Pot
	HEMI	Yellow Dwarf Daylily	<i>Hemerocallis</i> var. 'Eerie Wonders'	#5P5 Pot
	GERA	Bloody Cranesbill	<i>Geranium sanguineum</i> var. 'Shepherd's Warning'	#5P5 Pot
	HEUC	Coral Bell	<i>Heuchera moranensis</i> var. 'Bressingham Bronze'	#5P5 Pot
	IRIS	Sweet Iris	<i>Iris pallida</i> var. 'Vandagata'	#5P5 Pot
	HEMI	Dwarf Daylily	<i>Hemerocallis</i> var. 'Stella d'Or'	#5P5 Pot
Grasses	CARX	Vanished Sedge	<i>Carex morrowii</i> var. 'Aureo-vanagata'	#1 Pot
	TEST	Orange Flame Sedge	<i>Carex testacea</i>	#1 Pot
	KARL	Feather Reed Grass	<i>Calamagrostis x acutiflora</i> var. 'Lari Forester'	#2 Pot
	MISC	Miscanthus grass	<i>Miscanthus sinensis</i> var. 'Silverfeeder'	#2 Pot
	HACK	Hackensack grass	<i>Hackensack</i>	#1 Pot
	JUNC	Conspicuous Rush	<i>Juncus effusus</i> var. 'Spray'	#1 Pot

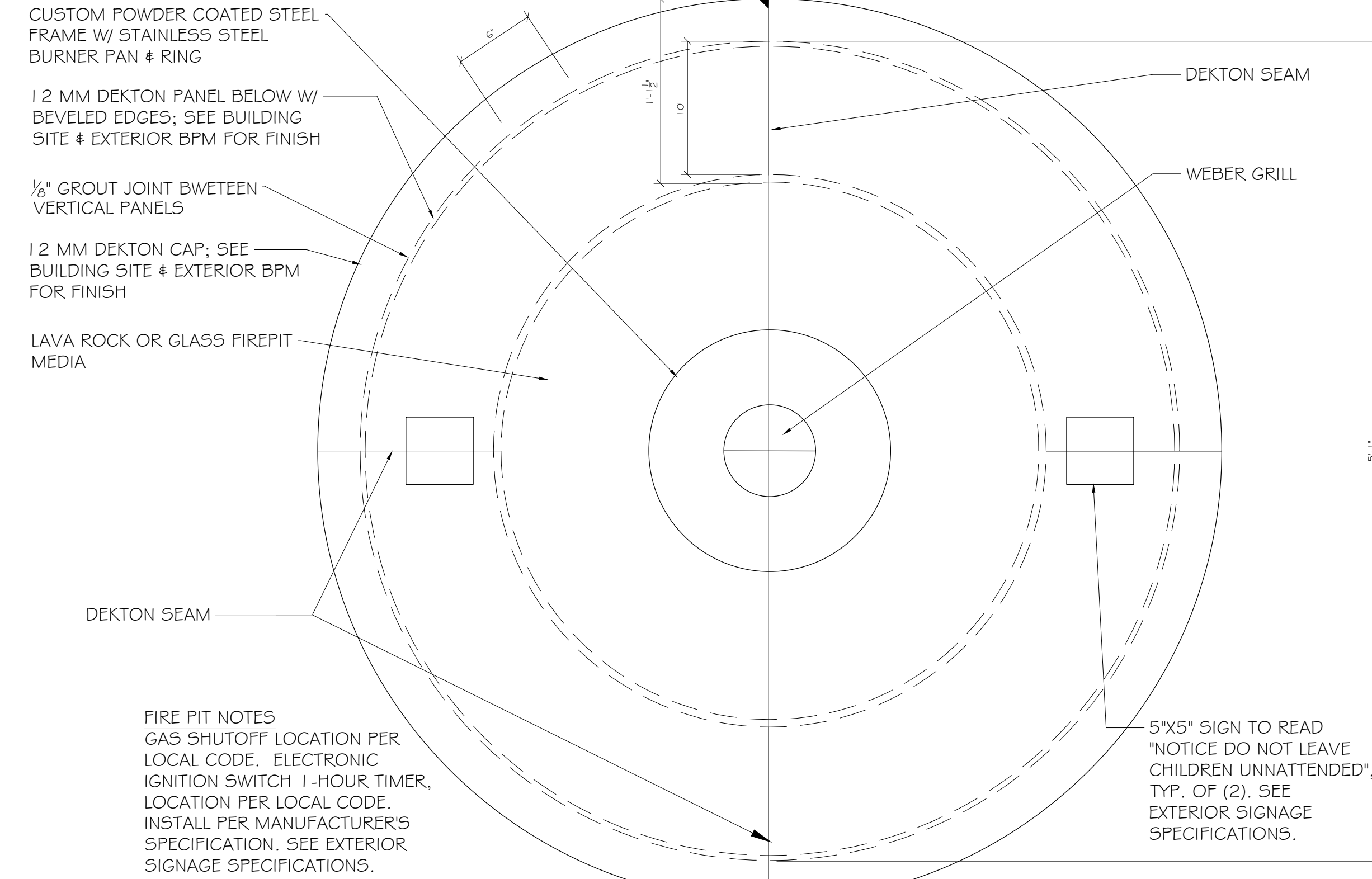


NOTES:
REFER TO SUPPLEMENTAL DETAILS (L2) FOR FIRE PIT AND BARBECUE GRILL DETAILS

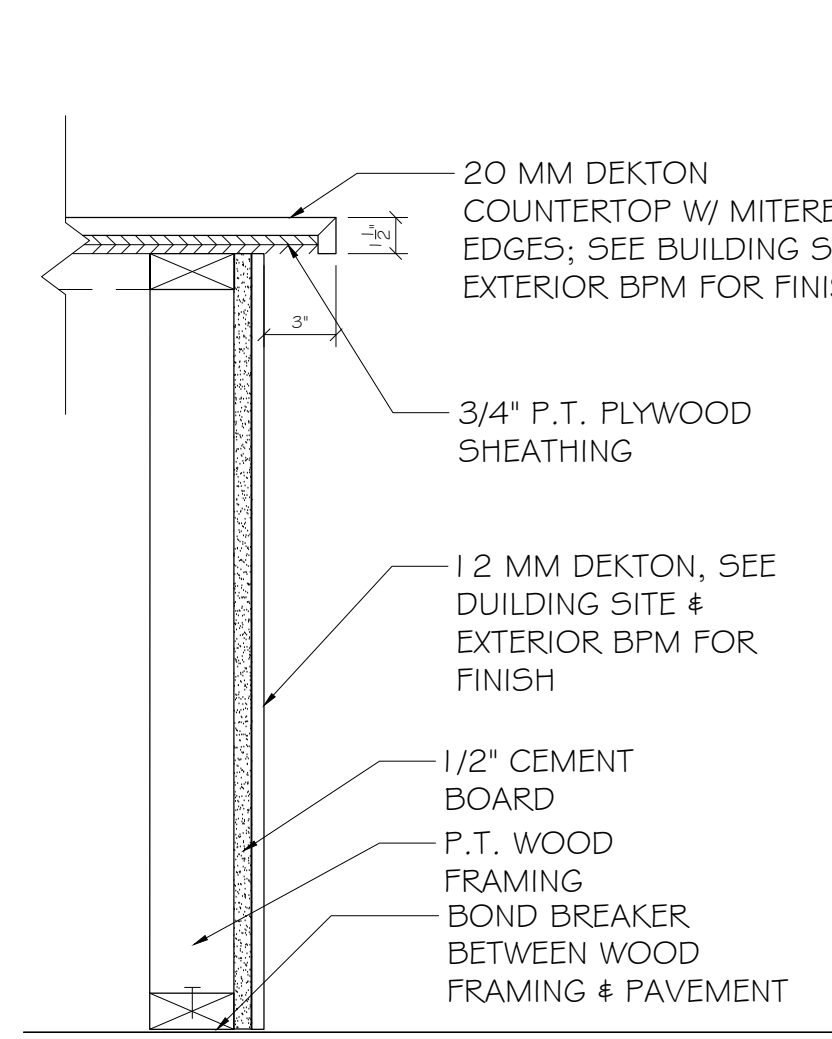
GRADING PLAN
 PROPOSED GRADE
 EXISTING GRADE



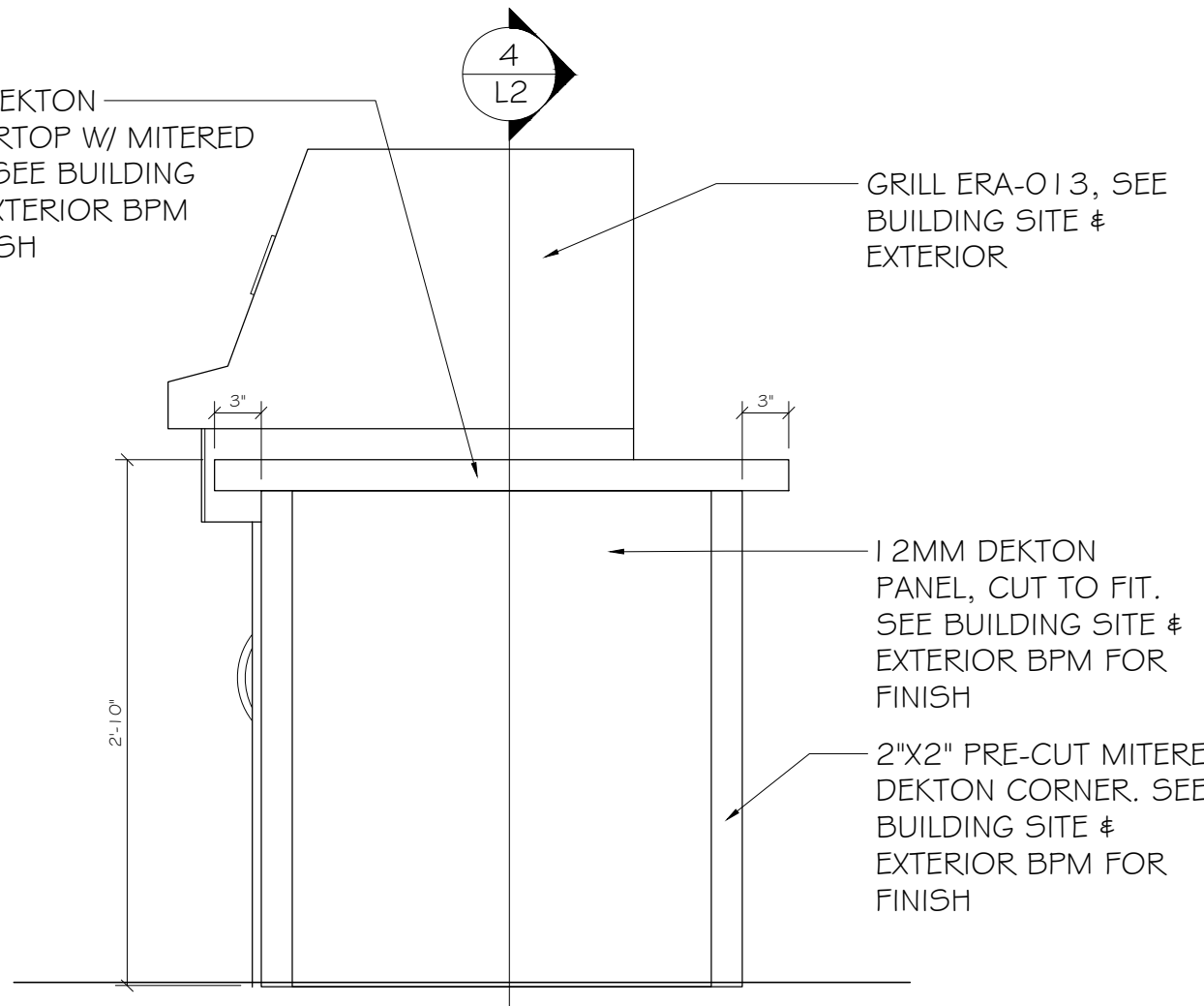
1 FIRE PIT SECTION
L2 SCALE 1" = 1/2" = 1' - 0"



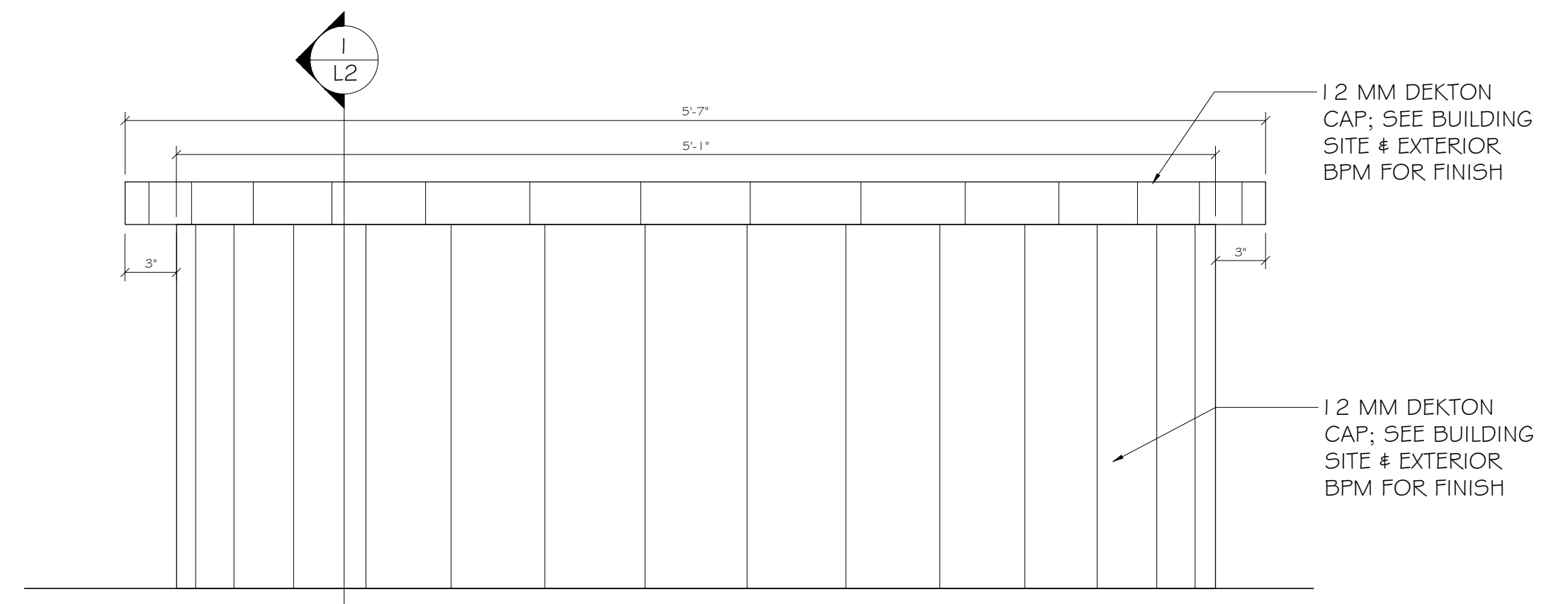
2 ENLARGED FIRE PIT PLAN
L2 SCALE 1" = 1/2" = 1' - 0"



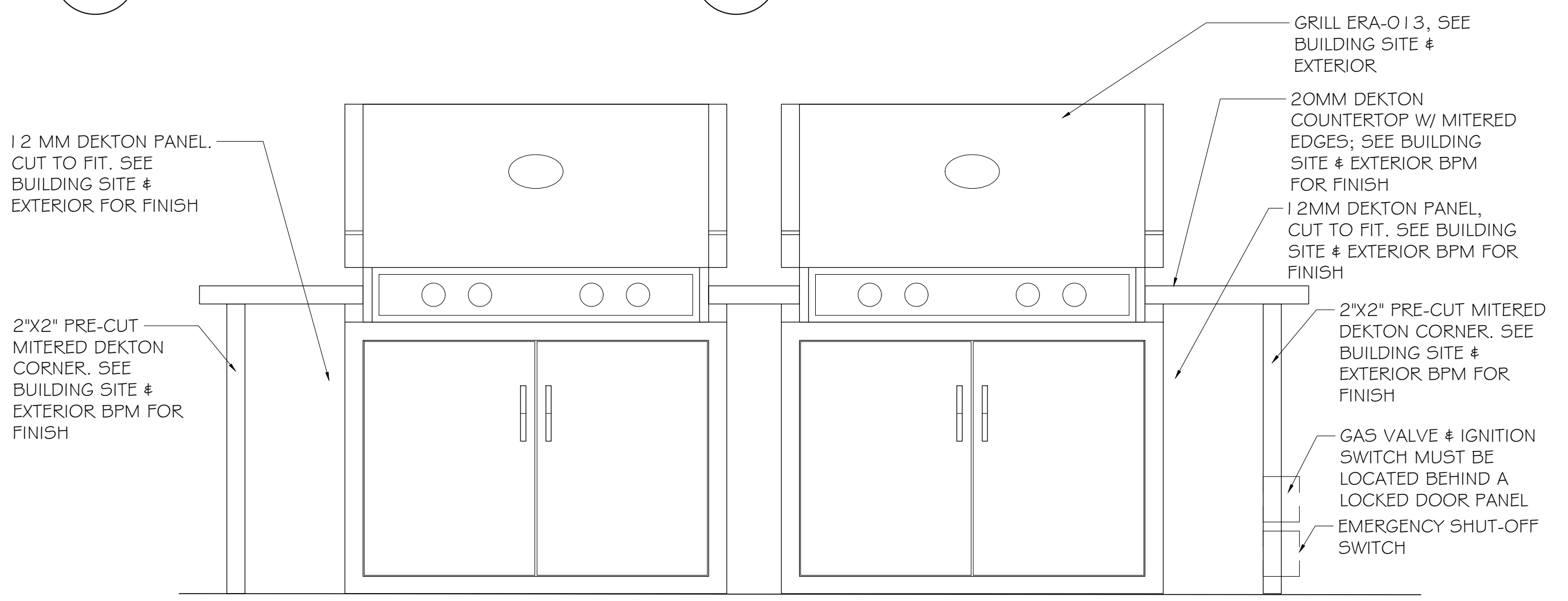
4 GRILL SECTION
L2 SCALE 1" = 1/2" = 1' - 0"



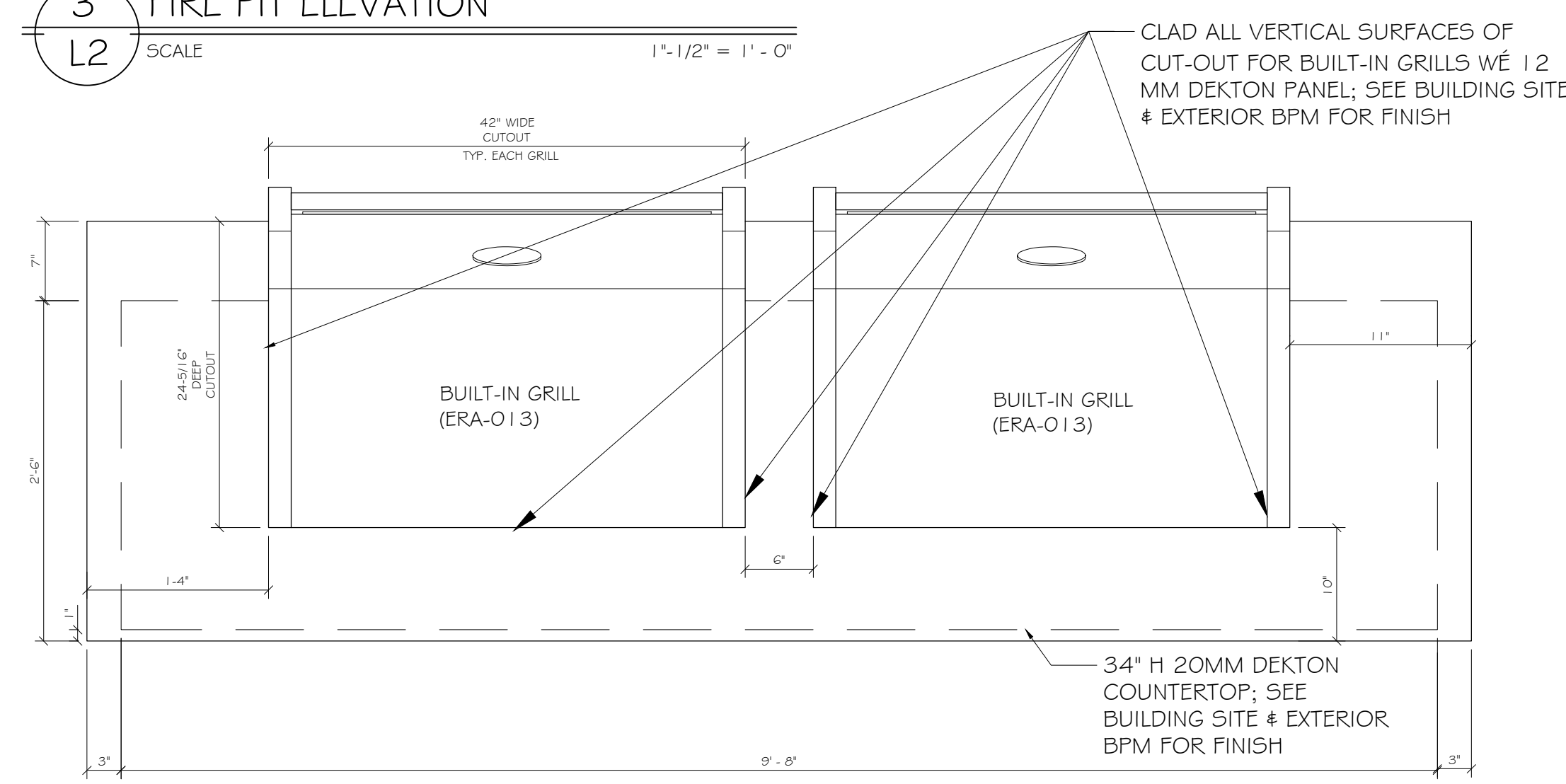
5 GRILL AREA SHORT ELEVATION
L2 SCALE 1" = 1/2" = 1' - 0"



3 FIRE PIT ELEVATION
L2 SCALE 1" = 1/2" = 1' - 0"



6 GRILL AREA LONG ELEVATION
L2 SCALE 1" = 1/2" = 1' - 0"



7 ENLARGE GRILL AREA PLAN
L2 SCALE 1" = 1/2" = 1' - 0"

ENTIRE "ISLAND" STRUCTURE, INCLUDING BACK AND SIDES OF CUT-OUT FOR BUILT-IN GRILLS, ERA-O13, AND COUNTERTOP SHALL BE CONSTRUCTED OF NON-COMBUSTABLE MATERIALS AND MUST COMPLY WITH AHJ.