

SIDNEY'S

These high priority actions will help build a resilient community. See the CWRP Action Plan for more details.

FIRESMART ROADMAP

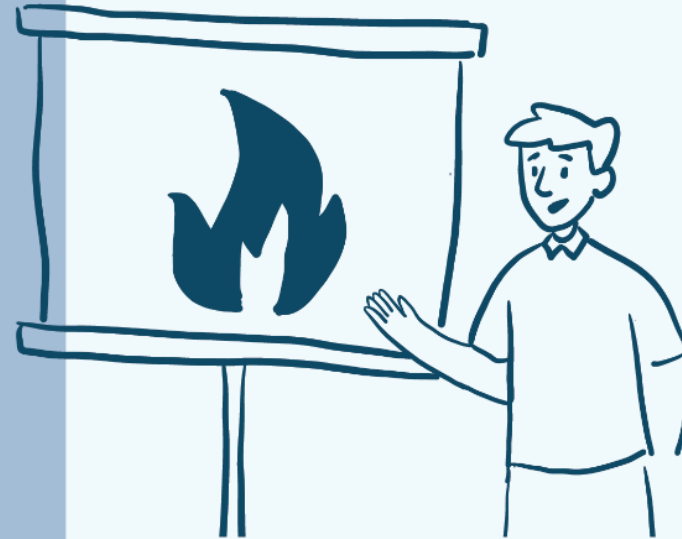
ENGAGEMENT PHASE

Building awareness. Focus on building an understanding of the risk of wildfire and the benefits of developing and growing a local FireSmart program.

- Publish the CWRP and highlights on Sidney's website.
- Expand access to FireSmart information and services.
- Expand participation in Saanich Peninsula Alert!



01



02

INITIATIVE PHASE

Taking actions and implementing local FireSmart activities. The focus is on building capacity both in people and your community to withstand wildfire events.

- Develop programs that help residents eliminate green waste and yard debris.
- Conduct FireSmart assessments of existing critical infrastructure and community assets.
- Support Sidney Fire Department members with training on SPU equipment and utilization.



INTEGRATION PHASE

Long-term and permanent changes to support community wildfire resiliency. The focus is on development considerations and collaboration with partners.

- Cooperate with response partners to acquire a Structure Protection Unit (SPU) for the Saanich peninsula.
- Work to implement FireSmart Assessment recommendations for critical infrastructure and community assets.

03

EXPANSION PHASE

FireSmart activities within the eligible WUI. The focus is on broader community planning.

- Incorporate recognition of and addressing wildfire hazard into the Official Community Plan.
- Provide FireSmart information with development application materials.
- Establish a guide for emergency preparedness levels during wildfire season.

04

